

**Software for warehouse and analytical account
of electronic components**

'Component'

Version 3.2.4

User Guide

Contents

1.	Introduction	6
2.	Terms & Definitions.....	7
3.	Installation	8
3.1.	System requirements	8
3.1.1.	Hardware requirement	8
3.1.2.	Software requirements	8
3.2.	Program directory	8
3.2.1.	Single PC	8
3.2.2.	PC & notebook	8
3.2.3.	Local network.....	8
3.3.	Initial configuration.....	8
4.	User interface.....	9
4.1.	Main window	9
4.2.	Main menu	9
4.2.1.	File menu items	9
4.2.2.	Operations menu items.....	9
4.2.3.	Documents menu item.....	9
4.2.4.	Reports menu item.....	9
4.2.5.	Catalogs menu item	10
4.2.6.	Production menu item.....	10
4.2.7.	Plan	10
4.2.8.	Analytics menu item.....	10
4.2.9.	Configuration menu item.....	10
4.2.10.	Tools menu item	11
4.2.11.	Window menu item.....	11
4.2.12.	Help menu item	11
4.3.	Dialogs	11
4.4.	Buttons	11
4.5.	Function keys	12
4.6.	Sorting records and customizing tables.....	13
5.	Working with the software	14
5.1.	Authorization	14
5.2.	Catalogs	14
5.2.1.	Currencies	14
5.2.2.	Units of Measurement	14
5.2.3.	Unit Conversion Factors	15
5.2.4.	Packages catalog.....	15
5.2.5.	Manufacturers.....	16

5.2.6.	Business Partners	17
5.2.7.	Items Categories	18
5.2.8.	Items Catalog.....	19
5.3.	Production	21
5.3.1.	Products	21
5.3.2.	Product Structure	21
5.3.3.	Bills of Materials	22
5.3.4.	Production Orders.....	22
5.3.5.	Production Order Items	23
5.3.6.	Batches of Products	23
5.3.7.	Alternative Parts	24
5.4.	Actions on Components	25
5.4.1.	Search in Stock	25
5.4.2.	Receipt of items with issuing invoice.....	26
5.4.3.	Receipt of items without issuing invoice.....	28
5.4.4.	Transfer of items in the warehouse.....	28
5.4.5.	Issue of items with invoice	30
5.4.6.	Issue of items without invoice	31
5.4.7.	Restocking Items	31
5.4.8.	The adjustment of component stocks	31
5.4.9.	Cancel operations	31
5.5.	Order Components	31
5.5.1.	Vendor Catalogs	32
5.5.2.	Orders to Vendors.....	32
5.5.3.	Ordered Items	33
5.6.	Components Reservation	33
5.6.1.	Reservations	34
5.6.2.	Components Reservation.....	34
5.7.	Viewing and printing documents	35
5.7.1.	Incoming Invoices	35
5.7.2.	Outgoing Invoices.....	36
5.7.3.	Restocking Invoices.....	36
5.8.	Actual Reports	36
5.8.1.	Stock Sheet	36
5.8.2.	Purchase Order.....	37
5.8.3.	Movement Report.....	38
5.8.4.	Event Log	38
5.9.	Planning	39
5.9.1.	Task List	39

5.9.2.	Payments.....	40
5.10.	Analytics Reports.....	40
5.10.1.	Receipts from Suppliers Report.....	40
5.10.2.	Consumption for Products	40
5.10.3.	Used Components Report	41
5.10.4.	Applicability of Component Report.....	41
5.10.5.	Movement of Component	41
5.10.6.	Range of Suppliers Report	42
5.10.7.	Dynamics of Prices Report	42
5.11.	Data exchange.....	43
5.11.1.	Import	43
5.11.2.	Export	43
5.12.	Preferences.....	44
5.12.1.	Configuring application settings	44
5.12.2.	Manage security settings	45
5.12.3.	Function keys	47
5.12.4.	Report Templates	47
5.12.5.	Definition of the warehouse's structure	47
5.12.6.	Selecting a language	48
5.13.	Service functions.....	49
5.13.1.	Select the database.....	49
5.13.2.	Inventory	49
5.13.3.	Deleting data	50
5.13.4.	System Information.....	50
5.13.5.	About dialog	50
5.14.	Update version software.....	51
5.15.	Database maintenance.....	51
5.16.	Closing the program.....	51
6.	Software licensing	52
6.1.	License options	52
6.2.	License info.....	52
6.3.	License activation	52
6.4.	License agreement.....	53
7.	Technical Support.....	53
8.	Appendices	54
8.1.	File list	54
8.2.	List of Reports	54
8.3.	Document and report templates	54
8.3.1.	Print form "Incoming Invoice"	55

8.3.2.	Print form "Outgoing Invoice"	56
8.3.3.	Print form "Bill of Materials"	57
8.3.4.	Print form "Stock Sheet"	58
8.3.5.	Print form "Purchase Order"	59
8.3.6.	Print form "Movement Report"	60
8.3.7.	Print form "Event Log"	61
8.3.8.	Print form "Dynamics of prices"	62
8.3.9.	Print form "Receipts of components from suppliers"	63
8.3.10.	Print form "Consumption for products"	64
8.3.11.	Print form "Used Components"	65
8.3.12.	Print form "Applicability of component"	66
8.3.13.	Print form "Range of supplies"	67
8.3.14.	Print form "Components Catalog"	68
8.3.15.	Print form "Product Costing"	69
8.3.16.	Print form "Kit Costing"	70
8.3.17.	Print form "Task List"	71

1. Introduction

This document is intended to guide the reader through the process of using Component software.

Component is the software for warehouse and analytical accounting of electronic components. It contains the key features for developers of electronics, OEMs, repair services, electronics enthusiasts and hobbyists.

Application features:

- manufacturers, vendors, packages catalogs;
- warehousing management;
- bill of materials;
- locations feature;
- purchasing history;
- products list;
- categories of components with tree structure;
- alternative parts;
- product batches;
- product costing;
- choosing a lot size;
- bill of materials;
- stock sheet;
- printing analytic reports and documents (invoices, orders);
- report designer;
- import and export data;
- password protection;
- user permissions;
- storage of data in the database MS Access;
- automatic check of updates;
- portable version with no installer required.

2. Terms & Definitions

Batch - a certain amount of similar products produced at the same time.

Bill of materials - a document containing a list of electronic components with the indication of their quantity necessary for a complete the finished product.

Catalog - an array of structured information.

Catalog of Components - the qualifier of the applied electronic components ordered on functional signs and united in categories.

Category - set of electronic components, combined on a functional basic. Examples of categories: resistors, capacitors, diodes, chips.

Component (electronic component) - an elementary integral part of an electronic device. Synonyms of an electronic component: a radio component, element.

Distributor (vendor) - a company supplier of electronic components.

Kit - two or more products which production and respectively purchase of components are interconnected.

Lot - a quantity of at a time manufactured products or kits.

Package - the unified designation which is determining the geometrical and landing sizes of an electronic component, and also number and an arrangement of its outputs.

Product - an electronic device (module) completed from electronic components.

Section (storage, store) - a physical part of a warehouse for storage of electronic components or other sections.

Vendor (distributor) - a company supplier of electronic components.

3. Installation

3.1. System requirements

3.1.1. Hardware requirement

Desktop PC or notebook with a free disk space of at least 10 Mb. Printer for printing reports (optional).

3.1.2. Software requirements

Software is compatible with operating system Windows XP or superior.

Microsoft .NET Framework version 4.0 or higher is required (included with the default Windows, and is also available for download on the Microsoft Web site).

MS Access Database Driver (.MDB Driver). The driver is a part of, and is available on the computer when you install any of the following software products:

- MS Access 2003, 2007, 2010;
- MS Access Database Engine 2010 Redistributive;
- MS Jet 4.0 Database Engine.

3.2. Program directory

3.2.1. Single PC

Extract the files from the archive (.zip) to any directory. Create a shortcut on the desktop for a quick start of the program.

NOTE! When placing the program in the Program Files directory, make sure that the user has rights to create and edit files, or use any other directory.

3.2.2. PC & notebook

Place the database on a removable disk for use on different computers.

3.2.3. Local network

Place the database on a network drive to use the local network. Make sure you have the rights to create and edit files in a shared directory for user accounts program.

3.3. Initial configuration

Run the program. Intro dialog is displayed during loading.



Before work make the necessary settings in menu "Configuration" using of this manual.

4. User interface

The program interface consists of a main window and dialog boxes.

4.1. Main window

Main window consists of a main menu, toolbar and status bar.



Main menu contains commands grouped by function.

Toolbar buttons are used for quick access to frequently used commands.

4.2. Main menu

4.2.1. File menu items

Import... - opens the Import dialog.

Exit - closes the program.

4.2.2. Operations menu items

Items Receipt... - opens the Items Receipt dialog.

Items Issue... - opens the Items Issue dialog.

Restocking Items... - opens the Restocking Items dialog.

Items Reservation... - opens the Items Reservation dialog.

Search in Stock... - opens the Search in Stock dialog.

4.2.3. Documents menu item

Incoming Invoices... - opens the Incoming Invoices dialog.

Outgoing Invoices... - opens the Outgoing Invoices dialog.

Restocking Invoices... - opens the Restocking Invoices dialog.

Reservations... - opens the Reservations dialog.

Orders to Vendors... - opens the Orders to Vendors dialog.

Ordered Items... - opens the Ordered Items dialog.

Vendor Catalogs... - opens the Vendor Catalogs dialog.

4.2.4. Reports menu item

Stock Sheet... - opens the Stock Sheet dialog.

Purchase Order... - opens the Purchase Order dialog.

Movement Report... - opens the Movement Report dialog.

Event Log... - opens the Event Log dialog.

4.2.5. Catalogs menu item

Currencies... - opens the Currencies dialog.

Units of Measurement... - opens the Units of Measurement dialog.

Unit Conversion Factors... - opens the Unit Conversion Factors dialog.

Packages... - opens the Packages dialog.

Manufacturers... - opens the Manufacturers dialog.

Business Partners... - opens the Business Partners dialog.

Items Categories... - opens the Categories of Components dialog.

Components Catalog... - opens the Components dialog.

4.2.6. Production menu item

Products... - opens the Products dialog.

Product Structure... - opens the Product Structure dialog.

Bill of Materials... - opens the Bill of Materials dialog.

Production Orders... - opens the Production Orders dialog.

Production Order Items... - opens the Production Order Items dialog.

Batches of Products... - opens the Batches of Products dialog.

Alternative Parts... - opens the Alternative Parts dialog.

4.2.7. Plan

Task List... - opens the Task List dialog.

Payments... - opens the Payment Schedule dialog.

4.2.8. Analytics menu item

Receipts from Suppliers... - opens the Receipts from Suppliers dialog.

Consumption for Products... - opens the Consumption for Products dialog.

Used Components... - opens the Used Components dialog.

Applicability of Component... - opens the Applicability of Component dialog.

Movement of Component... - opens the Movement of Component dialog.

Range of Supplies... - opens the Range of Supplies dialog.

Dynamics of Prices... - opens the Dynamics of Prices dialog.

4.2.9. Configuration menu item

Settings... - opens the Settings dialog.

Users... - opens the Users dialog.

Report Templates... - opens the Report Templates dialog.

Function Keys... - opens the Function Keys dialog.

Store Sections... - open the Store Sections dialog.

4.2.10. Tools menu item

Select Database... - opens the Select Database dialog.

Inventory... - opens the Inventory dialog.

Delete Data... - opens the Delete Data dialog.

4.2.11. Window menu item

Horizontal... - selects the horizontal location of the dialog boxes.

Verical... - selects the vertical location of the dialog boxes.

Cascade... - selects the cascade location of the dialog boxes.

4.2.12. Help menu item

License Info... - opens the License Info dialog.

System Information... - opens the System Information dialog.

Check for Updates – checks for program updates.

About... - open the About dialog.





4.3. Dialogs















The size and position of all dialog windows containing the table can be changed by the user. Changes the user interface are saved and restored automatically by the program.

Examples of dialog boxes that are referenced from several sections of the document are given below.

4.4. Buttons

Buttons in the dialog windows unified. Buttons with the same icons perform similar functions in all dialog boxes. The buttons shown in the table:

No	Button	Caption	Description
1		Open File	Button press opens a file selection dialog box containing the selected type of data to be imported into the database.
2		Import	Button press opens the Import dialog box depending on the current dialog box.
3		Export to File	Button press opens a file selection dialog to export data from the table. Data will export from the visible columns in the table and in the selected sort order.
4		Preview	Button press opens a preview of the document or report.

No	Button	Caption	Description
5		Print	Button press sends a document or report to print on the default printer.
6		Add	Button press adds a new object to the table. Depending on the type of object is created or an object with default attributes, or displays a dialog for entering the attributes of the object.
7		Edit	Button press opens a dialog to change an object attributes. The button is active when the object selected.
8		Move	Button press opens a dialog to select a new parent for an embedded object in the hierarchical list.
9		Delete / Cancel	Button press deletes the selected object in a table or cancels the selected operation.
10		Save to DB	Button press saves the changes made to the database. The button is active when data changed.
11		Find	Button press starts the search or opens a window to enter the criteria search.
12		Criteria Search	Button press opens a dialog box for data selection criteria to display in the table.
13		Photo	Button press opens the "Photo" dialog box to view and change the image of the selected object.
14		Refresh	Button press reloads the data from the database to display in the table.
15		Columns Selections	Button press shows a list of possible columns to select / deselect the columns in the table.
16		Options	Button press opens the settings for the current dialog box.
17		Select	Button press selects the current object in the table or list and closes the dialog box. The button is active when you can select an object.
18		Help	Button press opens help information associated with the current dialog.

4.5. Function keys

To access frequently used functions of the program allows you to use the "hot" keys. They may be either alphabetic key or function key or combinations of keys: ALT or CTRL or SHIFT + alphabetic key. The specified key combinations are pre-configured and can be changed by the user. You can view "hot" keys and adjust function keys in the "Function keys" dialog.

The list of "hot" keys given in the table:

Main Window	
Shift + C	Open the "Components Catalog" dialog
F10	Open the "Find Components" dialog
Ctrl + L	Open the "Event Log" dialog
Dialogs	

Alt + V	Press button "Preview"
Alt + A	Press button "Add"
Ctrl + F	Press button "Find"
Ctrl + S	Press button "Select"
Esc	Close dialog

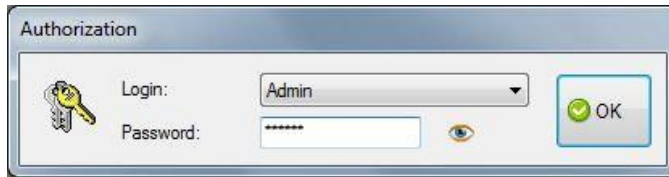
4.6. Sorting records and customizing tables

Width, visibility and the order of columns can be adjusted in all the tables. Use drag & drop columns for adjust. The sort order of records can be changed click on the title of a table column.

5. Working with the software

5.1. Authorization

You will see this dialog when start the program if the authorization mode enabled.



Select user and enter the current password. Password embedded user "Admin" default - "123456". To enter the program, click button "OK".

By default the request of authorization is disabled. Authentication mode is being selected in dialog "Users".

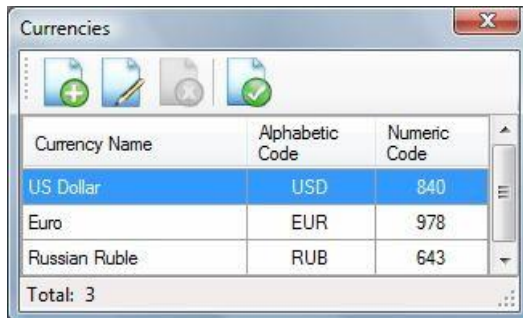
5.2. Catalogs

Use of catalogs allows exclude repeated input of often used data.

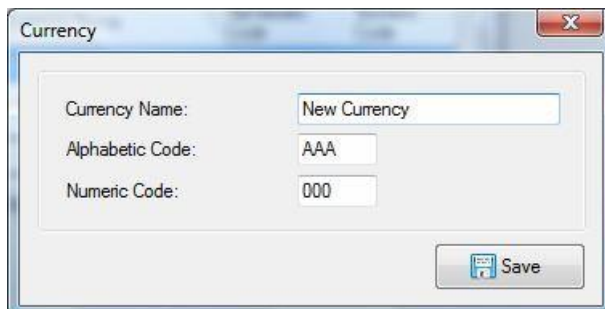
Catalogs contain as the basic data delivered together with the program, and the data entered by the user in the course of work.

5.2.1. Currencies

The program includes a list of usable currencies.

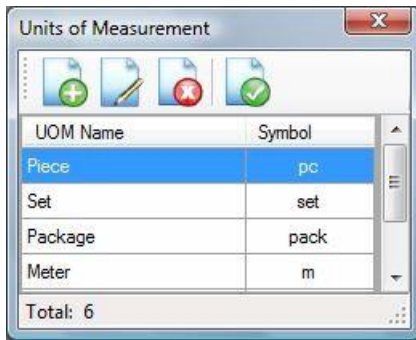


To add a new currency click button "Add". "Currency" dialog box will appear.

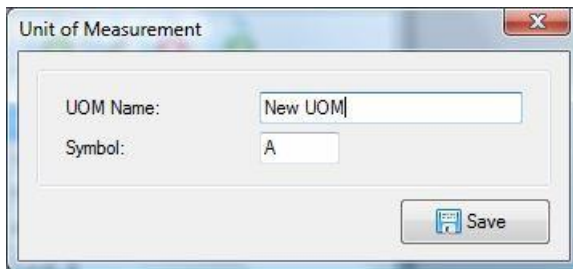


5.2.2. Units of Measurement

The program contains units of measurements.

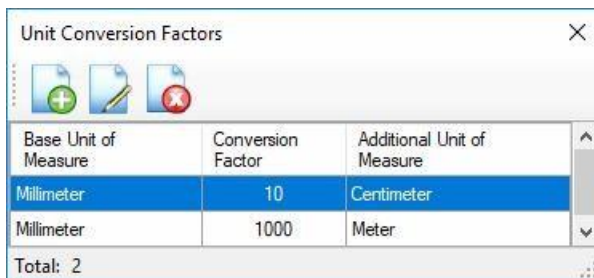


To add a new unit of measurement, click button "Add". "Unit of Measurement" dialog box will appear.

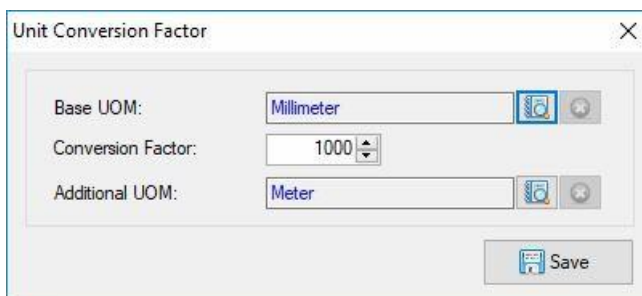


5.2.3. Unit Conversion Factors

The program contains a directory of conversion factors from the basic unit of measurement to additional UOM.



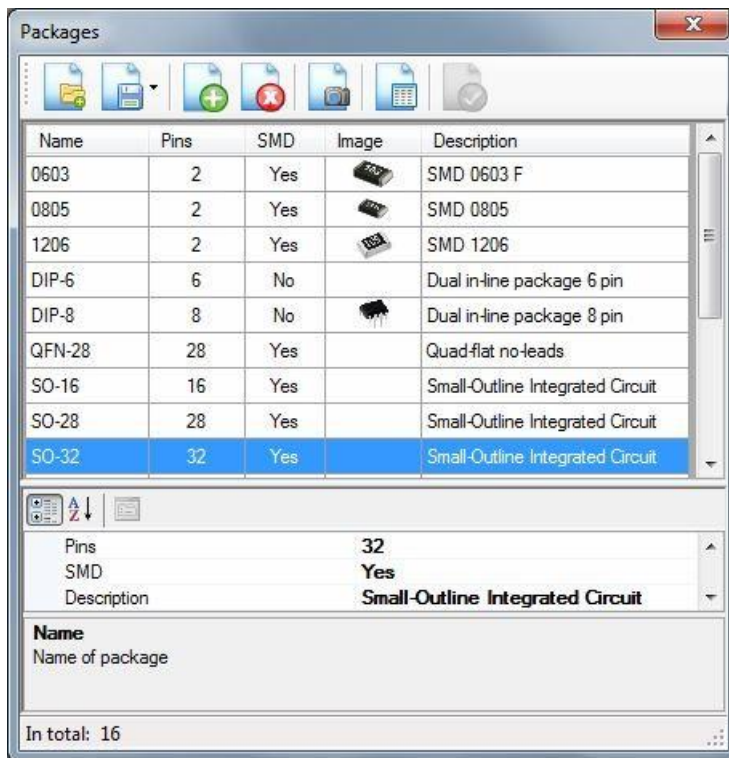
To add a new conversion factor, click button "Add". "Unit Conversion Factor" dialog box will appear.



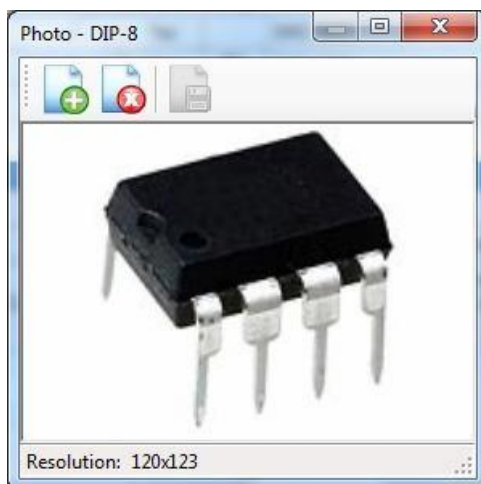
Select a base UOM and an additional UOM, enter the value of the conversion factor and click the "Save" button.

5.2.4. Packages catalog

The program includes list packages of electronic components.

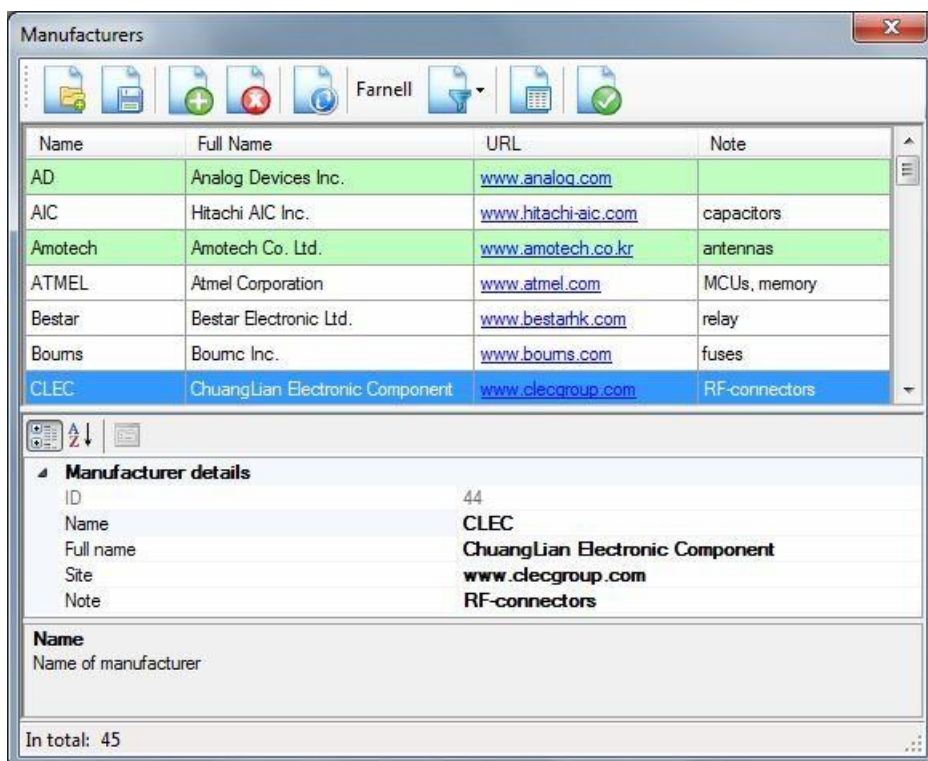


To view, add or delete the image of object, click "Photo". "Photo" dialog box will appear.



5.2.5. Manufacturers

The program contains the reference manufacturers of electronic components. Directory allows you to set the relationship between manufacturers and component suppliers.

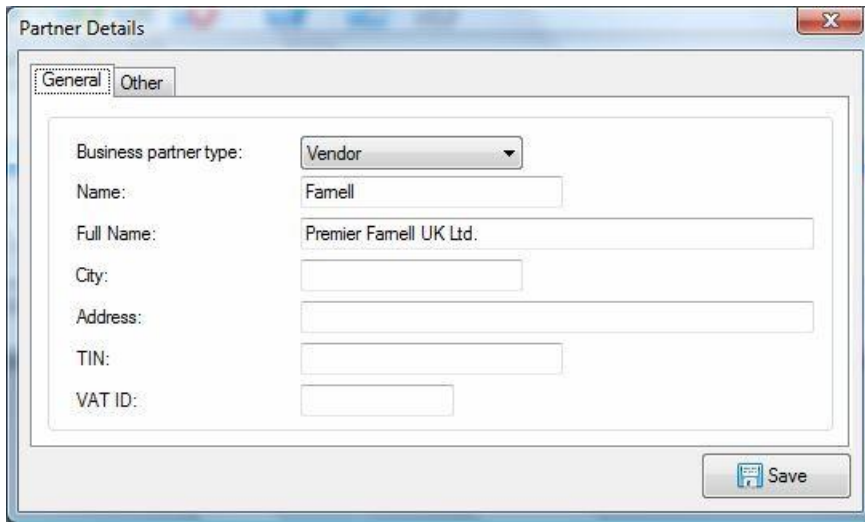


5.2.6. Business Partners

The program contains a catalog of business partners – vendors and customers. Catalog allows you to set the relationship between manufacturers and vendors.



To add a new partner to the catalog, click the "Add" button. The "Partner Details" dialog box appears.



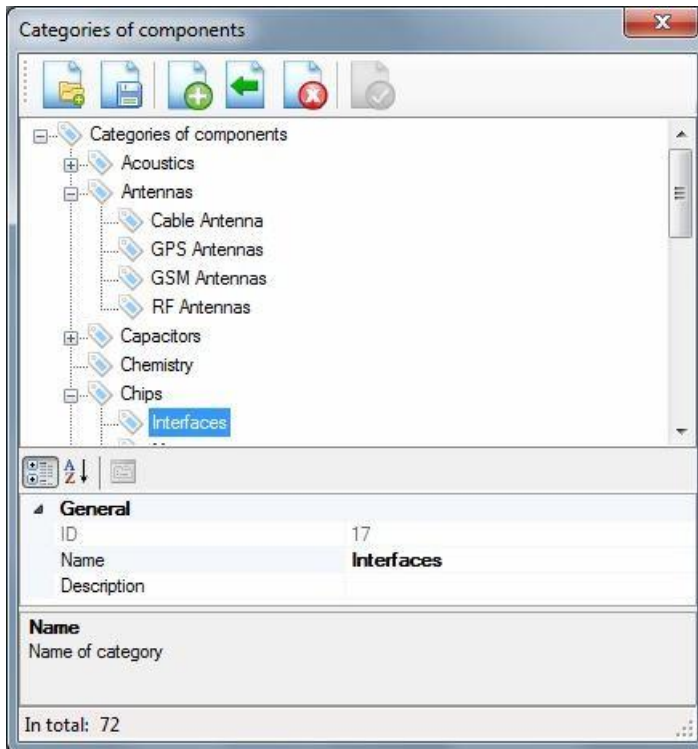
The 'Partner Details' dialog box has two tabs: 'General' (selected) and 'Other'. The 'General' tab contains the following fields:

- Business partner type: Vendor (dropdown menu)
- Name: Famell (text field)
- Full Name: Premier Famell UK Ltd. (text field)
- City: (text field)
- Address: (text field)
- TIN: (text field)
- VAT ID: (text field)

A 'Save' button with a floppy disk icon is located at the bottom right of the dialog.

5.2.7. Items Categories

Categories allow you to create a hierarchical list to find the desired component quickly. The entire range of components is divided into categories.



The 'Categories of components' dialog box shows a hierarchical tree of component categories. The tree structure is as follows:

- Categories of components
 - Acoustics
 - Antennas
 - Cable Antenna
 - GPS Antennas
 - GSM Antennas
 - RF Antennas
 - Capacitors
 - Chemistry
 - Chips
 - Interfaces (highlighted)

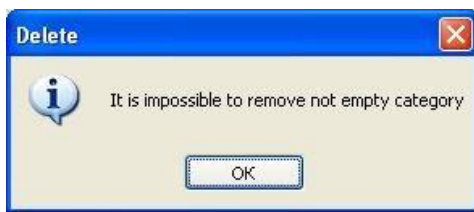
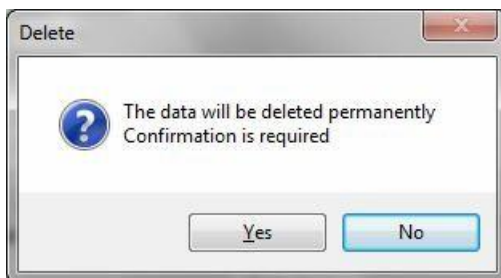
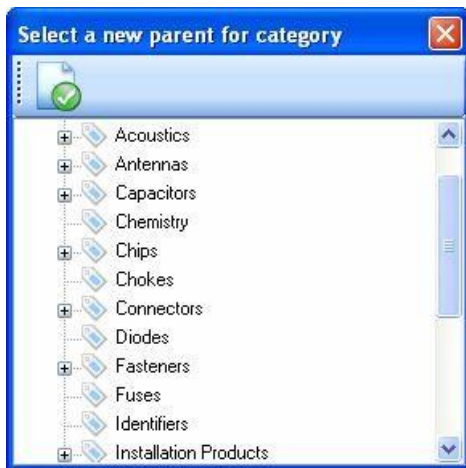
Below the tree, there is a 'General' tab with the following information:

General	
ID:	17
Name	Interfaces
Description	

Below the table, there is a 'Name' section with the text 'Name of category' and a text input field.

At the bottom, it says 'In total: 72'.

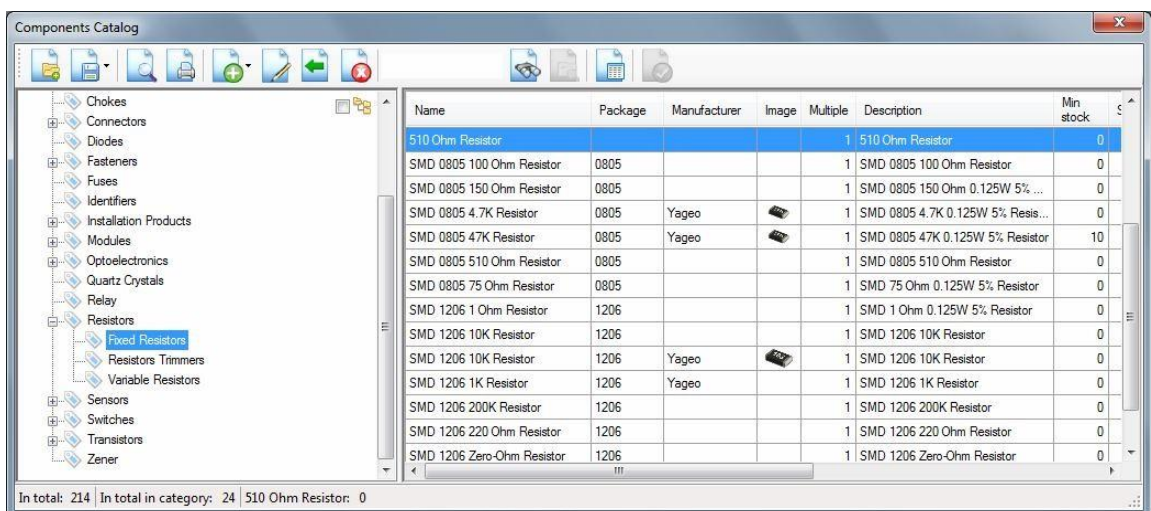
To expand or collapse all nodes right click on the tree. Select "Expand All" or "Collapse All" item in the context menu.



5.2.8. Items Catalog

The program contains a directory of electronic and other components used.

To view, supplement or modify the catalog, select option "Items Catalog" menu "Catalogs".



To expand or collapse all nodes right click on the tree. Select "Expand All" or "Collapse All" item in the context menu.

To select columns to display, click "Columns Selection" button. You will see a popup menu with a list of all available columns. Check the boxes next column, which will be displayed in the table.

- ☒ Name
- ☒ Material Number
- ☒ UOM
- ☒ Package
- ☒ Manufacturer
- ☒ Manufacturer Part Number
- ☒ Image
- ☒ Order Code
- ☒ Multiple
- ☒ Storage
- ☒ Min stock
- ☒ DataSheet
- ☒ Description
- ☒ Category

Component

Component details

Category: Fixed Resistors

Component Name: SMD 0805 4.7K Resistor

Unit of Measurement:

Material Number:

Manufacturer: Yageo

Manufacturer Part Number:

Package: 0805

Multiple for order: 1

Default store section:

Minimum stock: 0

Selling price: Standard markup percentage, %

[Data Sheet:](#)

Description: SMD 0805 4.7K 0.125W 5% Resistor

Image

Order Codes

171-2070 Famell

Save Close

Select a new category of component

Categories of components

- Acoustics
- Antennas
- Capacitors
 - Ceramic
 - Electrolytic
 - Tantalum
- Chemistry
- Chips
- Chokes
- Connectors
- Diodes

Right click on the table to open a context menu:

Details...
Order Codes ,Prices...
Location...
Movement...
Dynamics of Prices...
Applicability...
Alternative Parts...

5.3. Production

5.3.1. Products

To generate the classifier manufactured products, click option "Products" menu "Production".

Products

No	Name	Description	Image	Length, mm	Width, mm	Height, mm	Plan demand	Project	File
1	Console PDK-4			100	100	0	0		
2	AA.0123456	Indication board of the PDK-1		100	100	0	0		
3	Module MDK-21			100	100	0	0		
4	Module MDK-4			30	20	0	0		
5	Panel 1			100	100	0	0		
6	Panel 2			100	100	0	0		

Total: 6

Product

Name:

AA.0123456

Description:

Indication board of the PDK-1

Plan demand:

0

Project:

File:

Dimensions:

Length, mm:

100

Width, mm:

100

Height, mm:

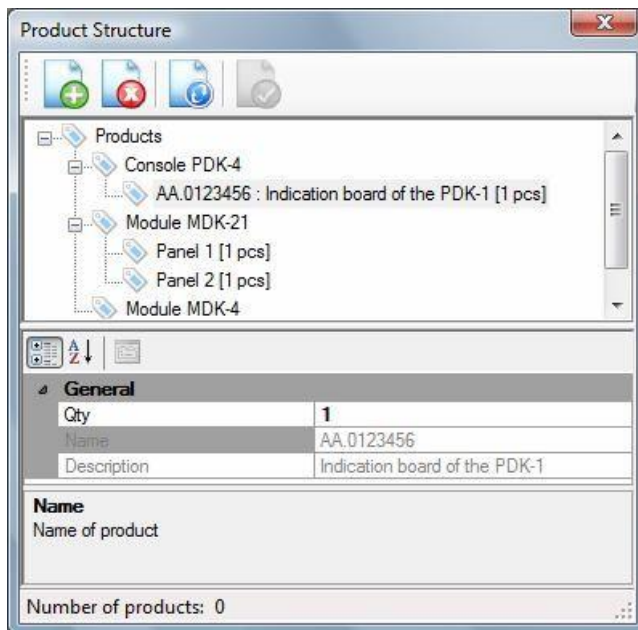
0

Save

5.3.2. Product Structure

The program supports nested grouping of manufactured products. For example, the device may include multiple modules, the modules divided into blocks, and the blocks on the electronic board.

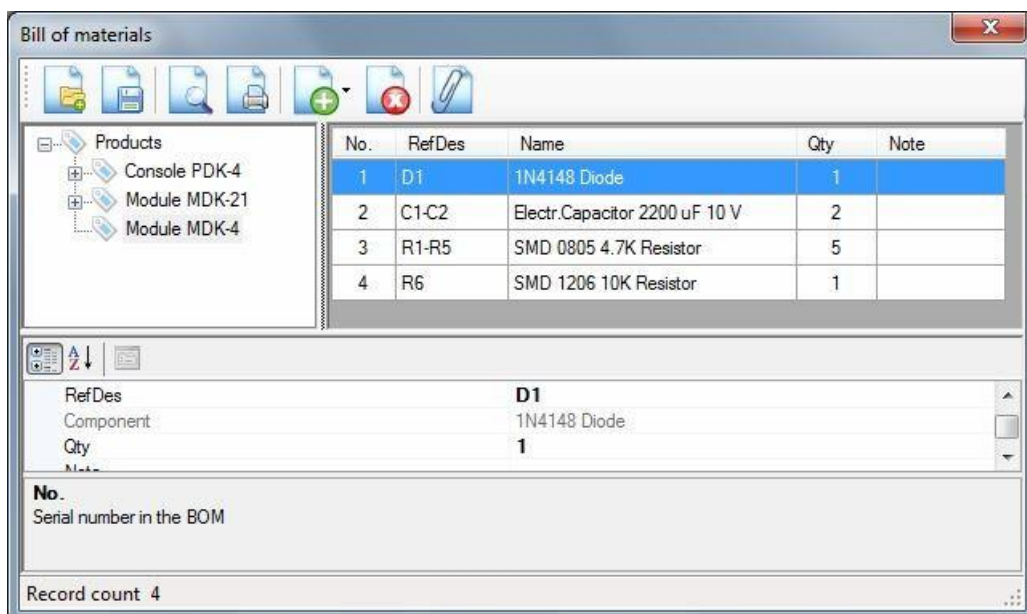
To generate the product structure, click option "Product Structure" menu "Production".



To expand or collapse all nodes right click on the tree. Select "Expand All" or "Collapse All" item in the context menu.

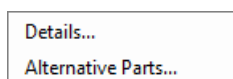
5.3.3. Bills of Materials

The set of components required for a complete of products is created in the form of a BOM.



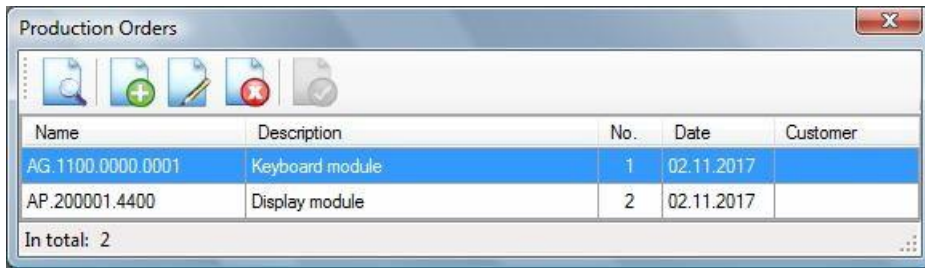
To expand or collapse all nodes right click on the tree. Select "Expand All" or "Collapse All" item in the context menu.

Right click on the table to open a context menu:



5.3.4. Production Orders

The program supports product combinations in production orders. This feature allows you to automatically calculate the cost of production and create sheets for the order of parts.



The 'Production Orders' window displays a table with the following data:

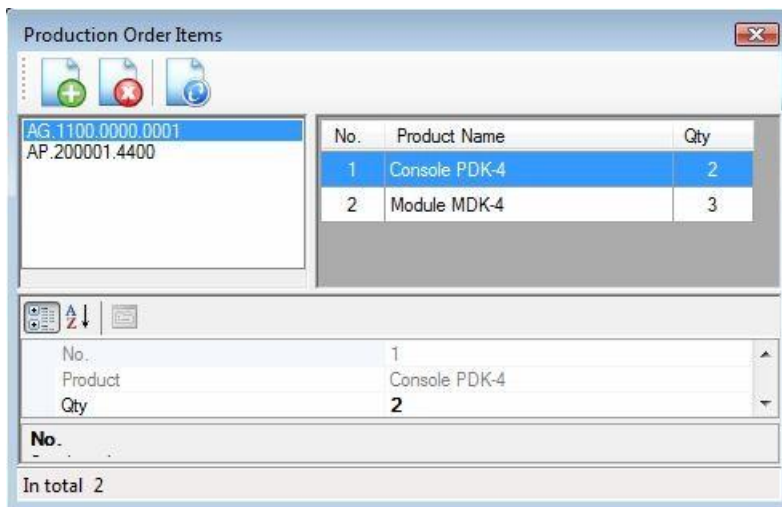
Name	Description	No.	Date	Customer
AG.1100.0000.0001	Keyboard module	1	02.11.2017	
AP.200001.4400	Display module	2	02.11.2017	

In total: 2

5.3.5. Production Order Items

The production order may include two or more products.

To specify the composition of the production order, click the item "Production Order Items" is the menu "Production".



The 'Production Order Items' window displays a list of items on the left and a table of details on the right.

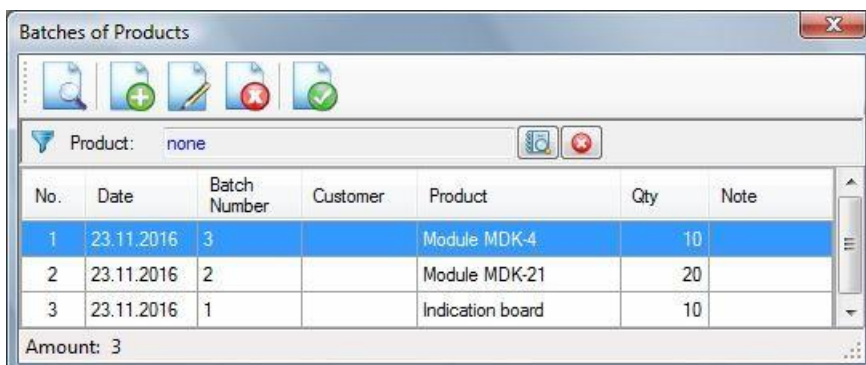
No.	Product Name	Qty
1	Console PDK-4	2
2	Module MDK-4	3

In total 2

5.3.6. Batches of Products

Support production batches allows you to automate the process of one-time or gradual write-off of parts of components for the production of products and check stocks in a warehouse for a production batch, and if necessary to create orders for the purchase of components.

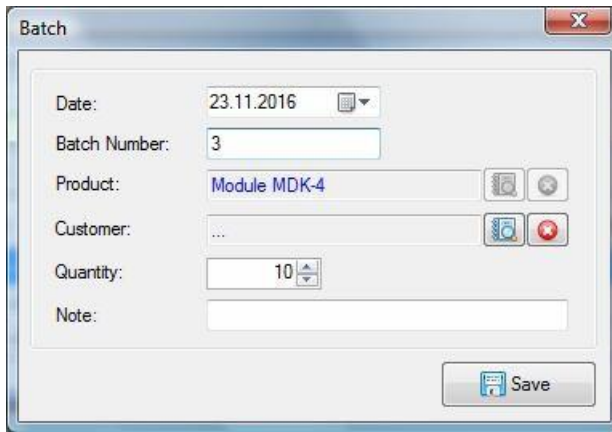
To work with the production batch click the item "Batches of Products" menu "Production".



The 'Batches of Products' window displays a table with the following data:

No.	Date	Batch Number	Customer	Product	Qty	Note
1	23.11.2016	3		Module MDK-4	10	
2	23.11.2016	2		Module MDK-21	20	
3	23.11.2016	1		Indication board	10	

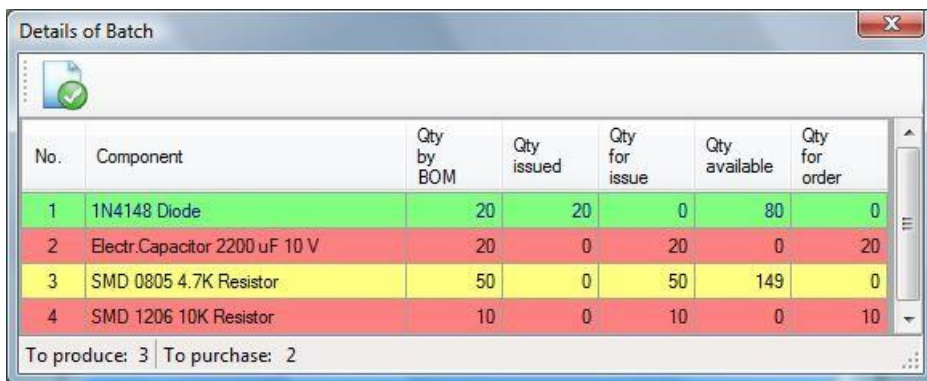
Amount: 3



Batch dialog box with the following fields:

- Date: 23.11.2016
- Batch Number: 3
- Product: Module MDK-4
- Customer: ...
- Quantity: 10
- Note: (empty text box)
- Save button

To view information about the availability of components for batch production, select the batch in the table and then click "Preview". The "Details of Batch" dialog box appears on the screen.



No.	Component	Qty by BOM	Qty issued	Qty for issue	Qty available	Qty for order
1	1N4148 Diode	20	20	0	80	0
2	Electr.Capacitor 2200 uF 10 V	20	0	20	0	20
3	SMD 0805 4.7K Resistor	50	0	50	149	0
4	SMD 1206 10K Resistor	10	0	10	0	10

To produce: 3 | To purchase: 2

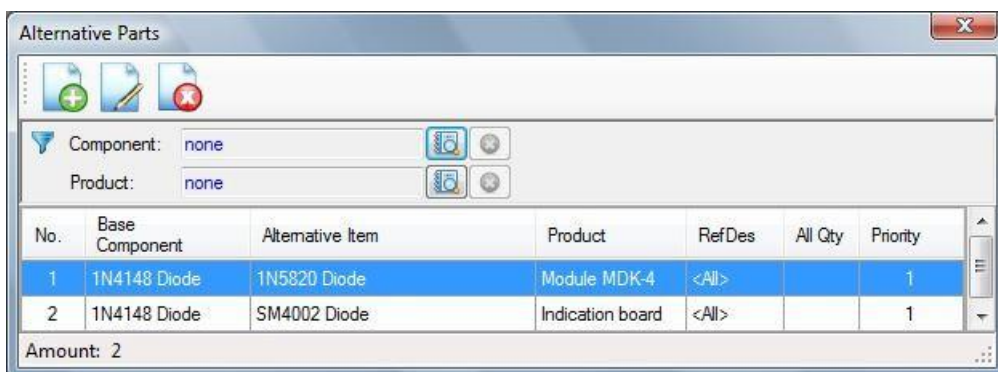
The color in the table means:

- 1) Red - not enough components for production batch. Create an order for the purchase of accessories components. The list for the order components will be formed automatically.
- 2) Yellow - the required components are available from stock. Create an invoice on write-off of components for production. The list of components for the write-off will be formed automatically.
- 3) Green - all the necessary components to complete batch production were written off.

5.3.7. Alternative Parts

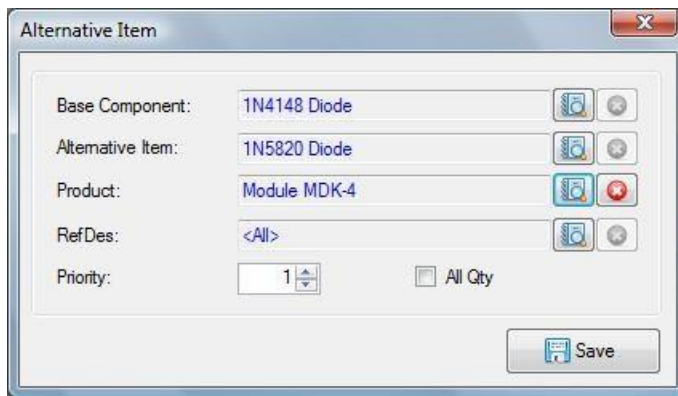
Components may have analogues used for the assembly of products in the absence of stock components from the BOM

To specify the substitution items click item "Alternative Parts" menu "Production".



No.	Base Component	Alternative Item	Product	RefDes	All Qty	Priority
1	1N4148 Diode	1N5820 Diode	Module MDK-4	<All>		1
2	1N4148 Diode	SM4002 Diode	Indication board	<All>		1

Amount: 2



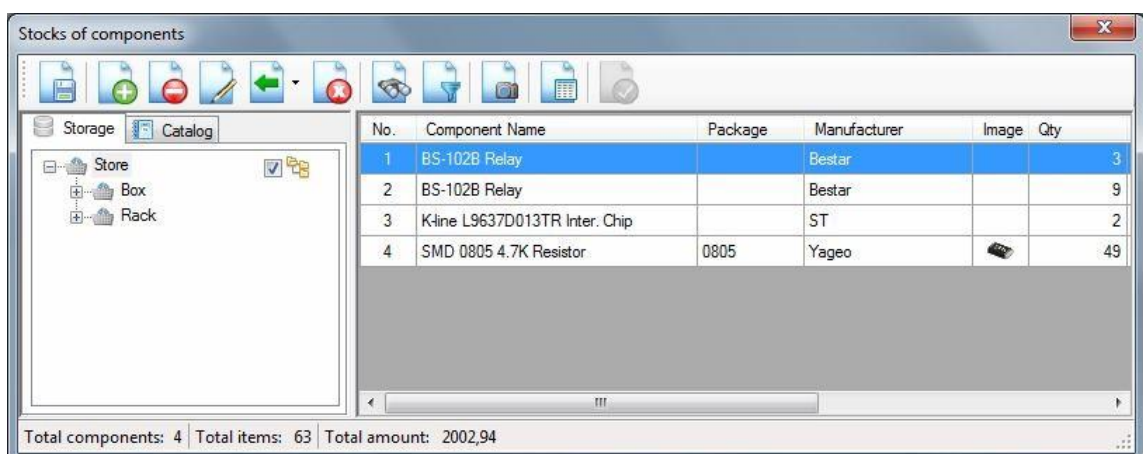
5.4. Actions on Components

The program allows you to record the following actual transactions carried out with the electronic components:

- Search for the availability of components;
- Receipt of components;
- The placement of components in stock;
- Consumption of components for the production of products;
- Adjustment of stocks;
- Cancel actions.

5.4.1. Search in Stock

"Search in Stock" dialog allows you to view the availability of components in each section of the warehouse or to search for the presence of the components meeting the specified search criteria.



Click the button "Columns Selection" to set the visible columns.

<input checked="" type="checkbox"/>	No.
<input checked="" type="checkbox"/>	Component Name
<input checked="" type="checkbox"/>	Package
<input checked="" type="checkbox"/>	Manufacturer
<input checked="" type="checkbox"/>	Image
<input checked="" type="checkbox"/>	UOM
<input checked="" type="checkbox"/>	Total Qty
<input checked="" type="checkbox"/>	Reserved Qty
<input checked="" type="checkbox"/>	Available Qty
<input checked="" type="checkbox"/>	Price
<input checked="" type="checkbox"/>	Amount
<input checked="" type="checkbox"/>	Storage
<input checked="" type="checkbox"/>	Inventory Date
<input checked="" type="checkbox"/>	Category

Click the button "Criteria search" to enter the search criteria.

Criteria search

☒ Similarity of the name: relay
 ☐ Category:
 ☐ Storage:

OK

Component Location

Component	Manufacturer	Qty	Storage
BS-102B Relay	Bestar	3	Box
BS-102B Relay	Bestar	9	

Sections: 2

Right click on the table to open a context menu:

Component Receipt...
Edit...
Component Issue...
Inventory...
Reservation...
Cancel Reservation...
Details...
Order Codes _Prices...
Location...
Active Orders...
Movement...
Dynamics of Prices...
Applicability...
Alternative Parts...

5.4.2. Receipt of items with issuing invoice

Operation of receipt of components is carried out at each purchase of components.

No.	Component Name	Manufacturer	Qty	Price	Total	UOM	Currency	Storage Section
1	1N4148 Diode	DC	50	0,10	5,00	pc	USD	Cell A1
2	BAV99 SOT23 Dual Diode		100	0,20	20,00		USD	
3	RL201 2A 50V Diode		200	0,30	60,00		USD	
4	SM4002 Diode		50	0,05	2,50		USD	
Total amount: 87,50								

Component Receipt

No.: 1

Component Name: SMD 0805 4.7K Resistor

Manufacturer: Yageo

UOM:

Qty: 100

Price: 0,10

Currency: USD

VAT: VAT included

VAT Rate, %: 18

Price w/o VAT: 0,08

Price with VAT: 0,10

Amount w/o VAT: 8,47

VAT Amount: 1,53

Amount with VAT: 10,00

Storage Section:

Save

Document details

Date: Wednesday, December 03, 2014

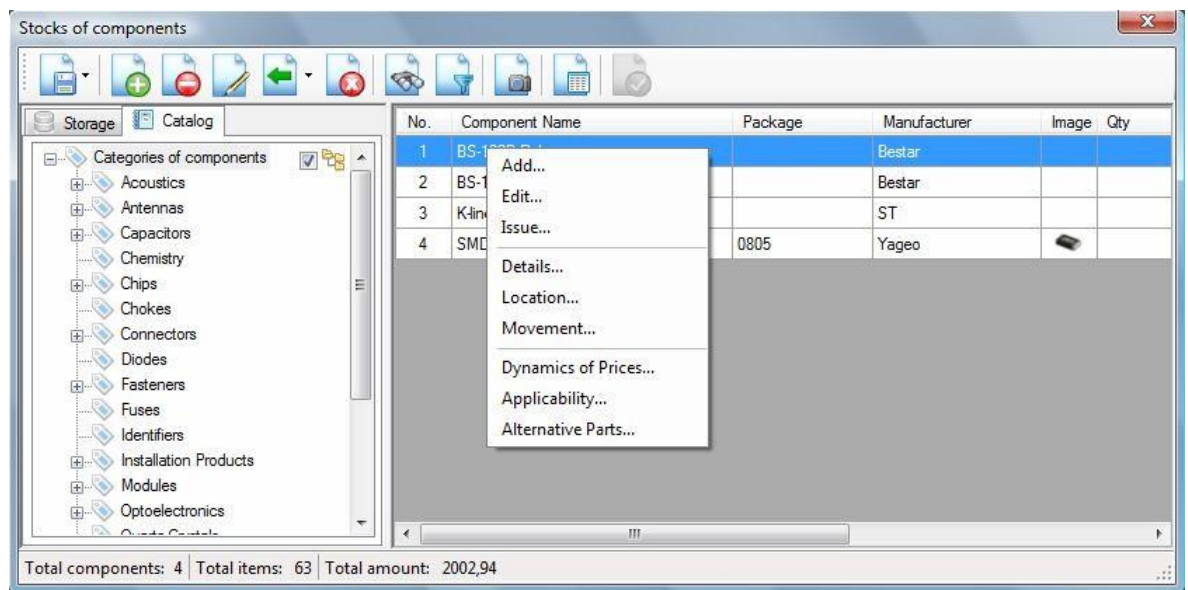
Number: 10

Vendor: Famell

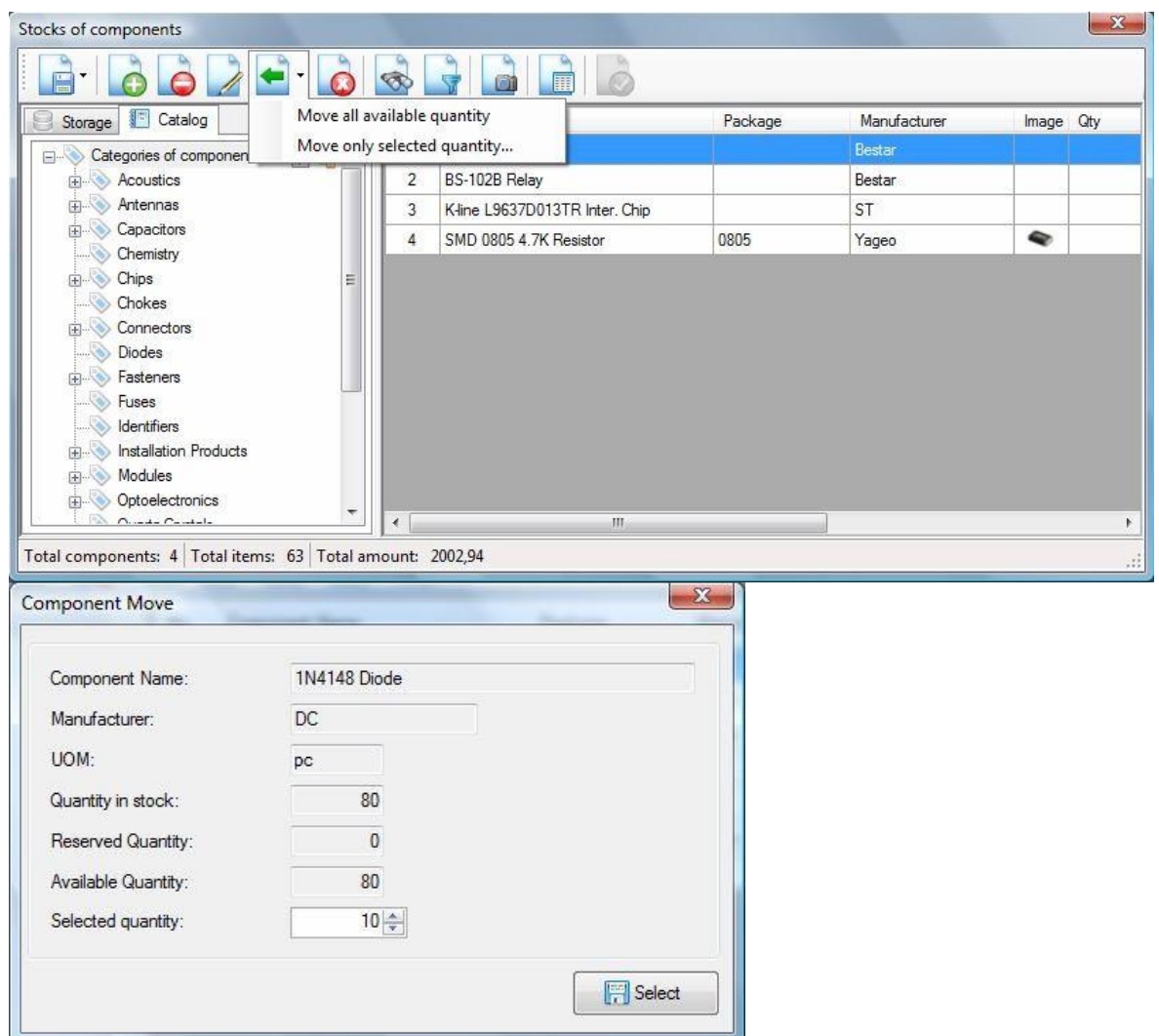
Note:

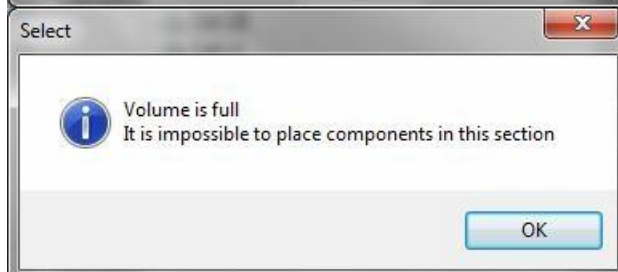
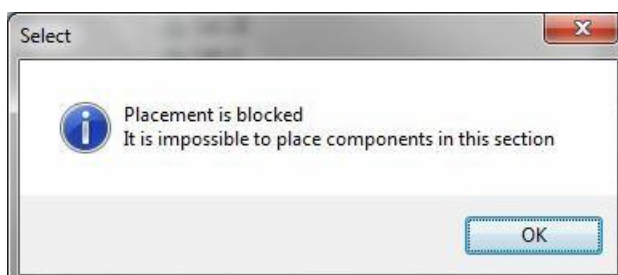
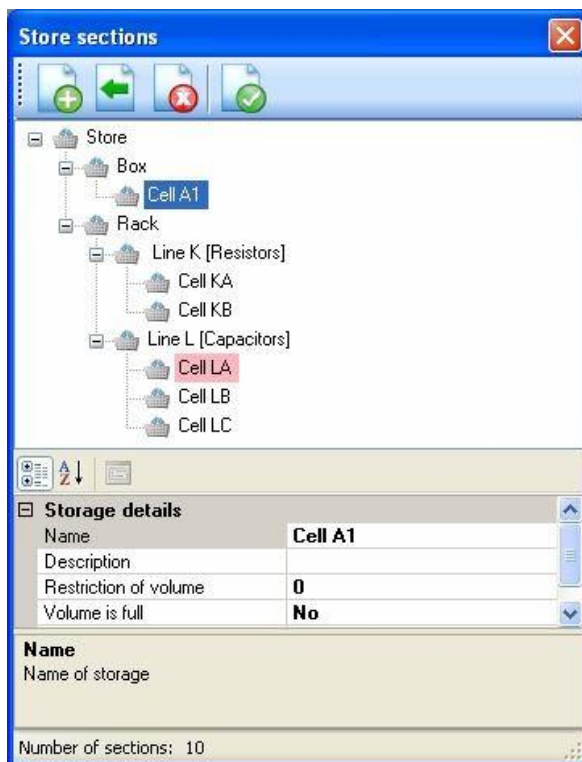
Save

5.4.3. Receipt of items without issuing invoice

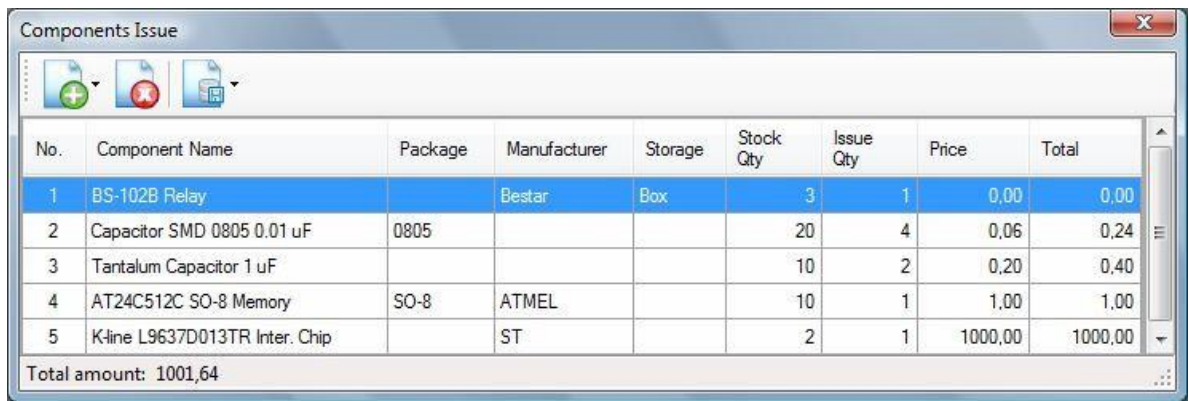


5.4.4. Transfer of items in the warehouse





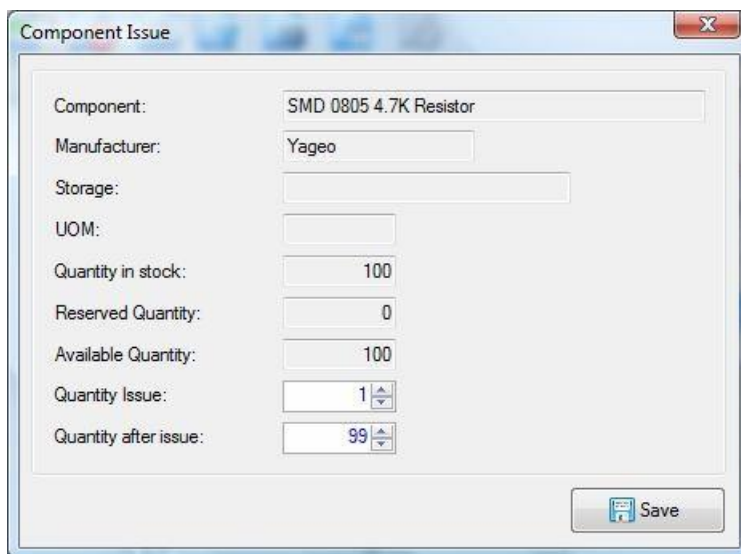
5.4.5. Issue of items with invoice



The 'Components Issue' dialog box contains a table with 9 columns: No., Component Name, Package, Manufacturer, Storage, Stock Qty, Issue Qty, Price, and Total. It lists 5 components for issue. The total amount is 1001,64.

No.	Component Name	Package	Manufacturer	Storage	Stock Qty	Issue Qty	Price	Total
1	BS-102B Relay		Bestar	Box	3	1	0,00	0,00
2	Capacitor SMD 0805 0.01 uF	0805			20	4	0,06	0,24
3	Tantalum Capacitor 1 uF				10	2	0,20	0,40
4	AT24C512C SO-8 Memory	SO-8	ATMEL		10	1	1,00	1,00
5	K-line L9637D013TR Inter. Chip		ST		2	1	1000,00	1000,00
Total amount: 1001,64								

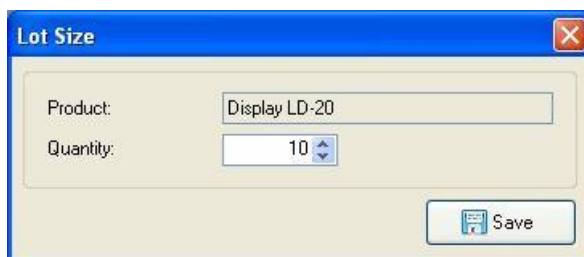
The automatic selection of possible replacement of missing components is made in order of priority specified in the alternative parts table.



The 'Component Issue' dialog box shows fields for Component, Manufacturer, Storage, UOM, Quantity in stock, Reserved Quantity, Available Quantity, Quantity Issue, and Quantity after issue. The 'Save' button is at the bottom right.

Component: SMD 0805 4.7K Resistor
Manufacturer: Yageo
Storage:
UOM:
Quantity in stock: 100
Reserved Quantity: 0
Available Quantity: 100
Quantity Issue: 1
Quantity after issue: 99

Save



The 'Lot Size' dialog box shows fields for Product and Quantity. The 'Save' button is at the bottom right.

Product: Display LD-20
Quantity: 10

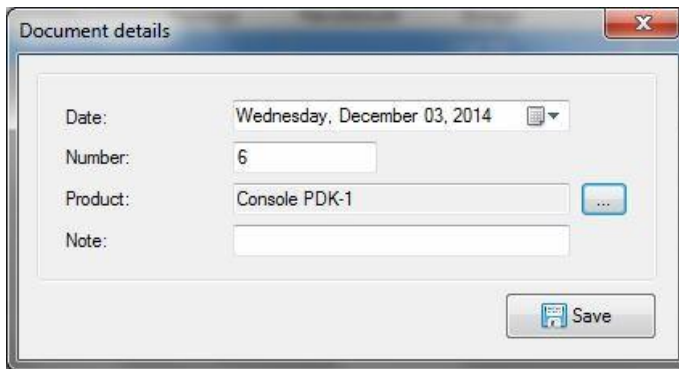
Save



The 'Search from bill of materials' dialog box displays a message: 'There is not enough components necessary for a product Continue anyway?'. It has 'Yes' and 'No' buttons at the bottom.

There is not enough components necessary for a product Continue anyway?

Yes No



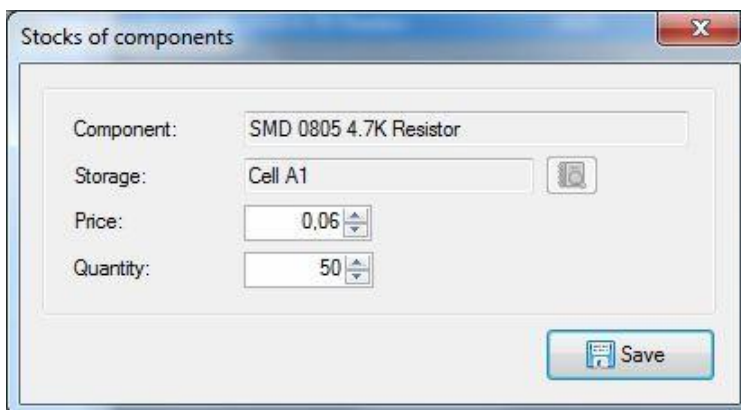
5.4.6. Issue of items without invoice

For fast issue of the components without the need for registration of the invoice in the "Stocks of Components" dialog box, select the component for issue and click on the "Issue" button.

5.4.7. Restocking Items

The operation of registering the return of components is carried out with the return to the warehouse of components of unspent goods for the manufacture of products, including rests of ribbons or other packages.

5.4.8. The adjustment of component stocks



5.4.9. Cancel operations

Cancel operations can return the presence of stocks of components in stock to the state existing before the operation.

Click item "Event Log" menu "Documents". Select the operation to be canceled and click "Cancel" button.

5.5. Order Components

The program allows you to record orders for the purchase of components for automating the following operations:

- Maintain a list of codes and prices for order;
- Formation of the registry of orders;

- View and edit order items.

5.5.1. Vendor Catalogs

The dialog used for viewing and editing the catalogue of the order codes and price of components. To view, supplement or modify the catalog, select option "Vendor Catalogs" menu "Documents".

Order Codes & Prices

Component: none
Distributor: none

No.	Component Name	Distributor	Order Code	UOM	Price	Currency	Note
1	SMD 0805 4.7K Resistor	Famell	171-2070		0.10	USD	
2	1N4148 Diode	Finder	2132345		0.05	USD	

Amount: 2

Order Code & Price

Component: SMD 0805 4.7K Resistor
Distributor: Famell
UOM:
Order Code: 171-2070
Price: 0.10
Currency: USD
Note:
Save

5.5.2. Orders to Vendors

The program allows you to create purchase orders for components and monitor their status.

To create a report, select the "Orders to Vendors" menu "Documents". You will see the "Orders to Vendors" dialog box.

Orders

Distributor: none
Status: All

No.	Order Date	Distributor	Order Number	Order State	Invoice	Order Amount	Note	Delivery Date	Currency
1	15.11.2016	Finder	1	Created		0.00		10.02.2017	USD
2	15.11.2016	Famell	2	Created		0.00		10.02.2017	USD
3	15.11.2016	Famell	3	Created		87.50		10.02.2017	USD

Amount: 3

Click "Add" button to create a new order. "Order" window will appear.

Order

Order Date: 15.11.2016

Order Number: 1

Distributor: Finder

Invoice No:

Invoice File:

Delivery Date: 10.02.2017

Order Currency: USD

Note:

Order State: Created

Save

The following order status: created, ordered, received.

"Created" - this status is assigned automatically when you create the order. Just order with the status of the data can be changed.

"Ordered" - set manually after the transfer order to the supplier. Only the components in the status display when viewing the active orders in the table "Stocks of components".

"Received" - set manually after the arrival of the received component to the warehouse. It is used for the purposes of the history of orders and reorder components.

5.5.3. Ordered Items

For the formation and adjustment of the ordered components in the table "Orders" and select the order from the context menu, select "Ordered Items" will be "Ordered Items" dialog box appears.

Ordered Items

Component: All

Order: All

Status: All

No.	Component	Delivery Date	Distributor	Order Status	UOM	Qty	Price	Currency
1	1N4148 Diode	10.02.2017	Farnell	Created		50	0,10	USD
2	BAV99 SOT23 Dual Diode	10.02.2017	Farnell	Created		100	0,20	USD
3	RL201 2A 50V Diode	10.02.2017	Farnell	Created		200	0,30	USD
4	SM4002 Diode	10.02.2017	Farnell	Created		50	0,05	USD

Amount: 4

Click "Add" button and select the required component to add it to the order. To edit the ordered quantity and prices, click in the appropriate column of the table and enter a new value

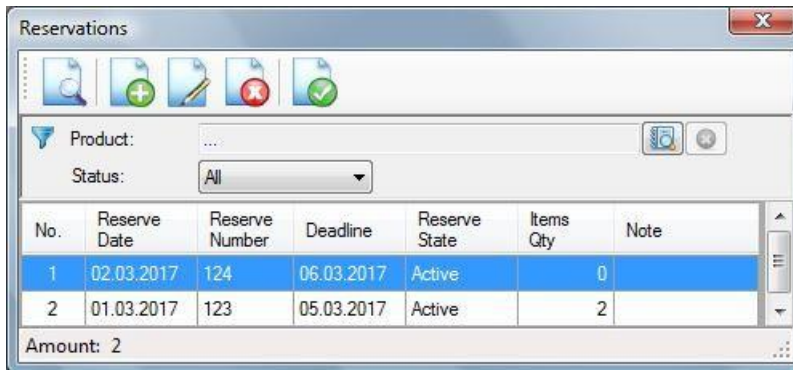
5.6. Components Reservation

The program allows you to reserve components in stock:

- creation and updating of the reserves list;
- view and edit reserve items.

5.6.1. Reservations

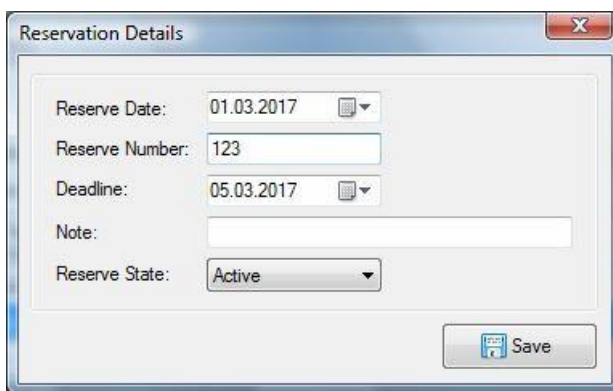
To view and create the reserves list, select the "Reservations" item in the "Documents" menu. The "Reservations" dialog box appears.



The "Reservations" dialog box displays a table of reservations. It includes a toolbar with icons for search, add, edit, delete, and save. Below the toolbar are filters for "Product" and "Status" (set to "All"). The table has columns for No., Reserve Date, Reserve Number, Deadline, Reserve State, Items Qty, and Note. The bottom status bar shows "Amount: 2".

No.	Reserve Date	Reserve Number	Deadline	Reserve State	Items Qty	Note
1	02.03.2017	124	06.03.2017	Active	0	
2	01.03.2017	123	05.03.2017	Active	2	

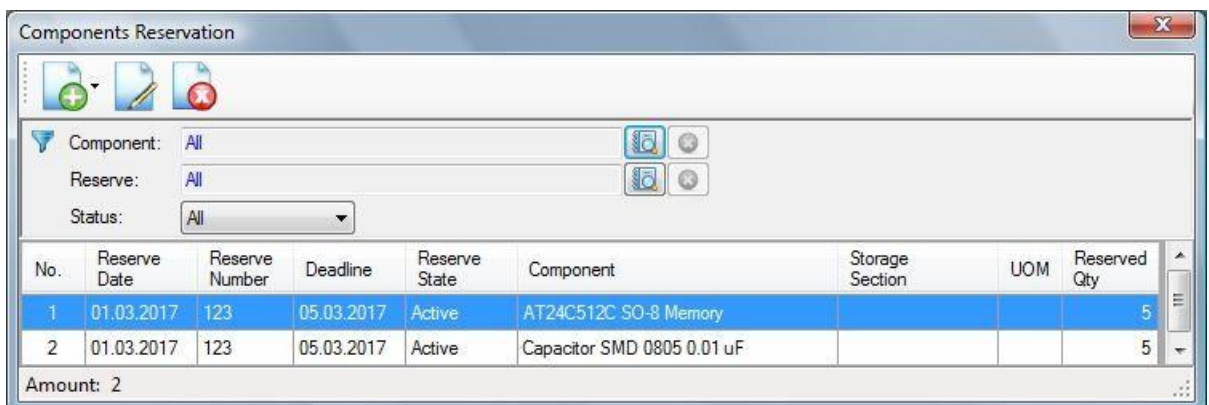
To create a new reserve, click the "Add" button. The "Reservation Details" window appears on the screen.



The "Reservation Details" dialog box contains input fields for "Reserve Date" (01.03.2017), "Reserve Number" (123), "Deadline" (05.03.2017), "Note", and "Reserve State" (Active). A "Save" button is at the bottom right.

5.6.2. Components Reservation

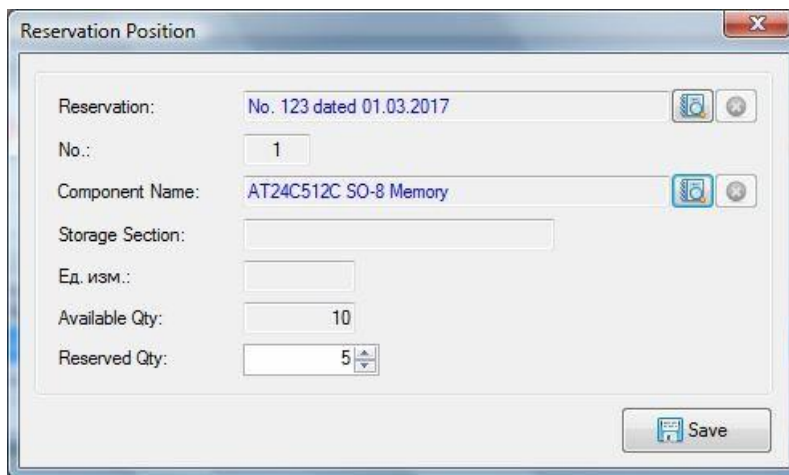
To create or view the list of reserved components select "Components Reservation" in the "Components" menu. The "Components Reservation" dialog box appears.



The "Components Reservation" dialog box displays a table of reserved components. It includes a toolbar with icons for search, add, edit, delete, and save. Below the toolbar are filters for "Component", "Reserve", and "Status" (set to "All"). The table has columns for No., Reserve Date, Reserve Number, Deadline, Reserve State, Component, Storage Section, UOM, and Reserved Qty. The bottom status bar shows "Amount: 2".

No.	Reserve Date	Reserve Number	Deadline	Reserve State	Component	Storage Section	UOM	Reserved Qty
1	01.03.2017	123	05.03.2017	Active	AT24C512C SO-8 Memory			5
2	01.03.2017	123	05.03.2017	Active	Capacitor SMD 0805 0.01 uF			5

To add a component to the reserve, click the "Add" button and select "Add Component" from the drop-down list.



Reservation Position

Reservation: No. 123 dated 01.03.2017

No.: 1

Component Name: AT24C512C SO-8 Memory

Storage Section:

Ед. изм.:

Available Qty: 10

Reserved Qty: 5

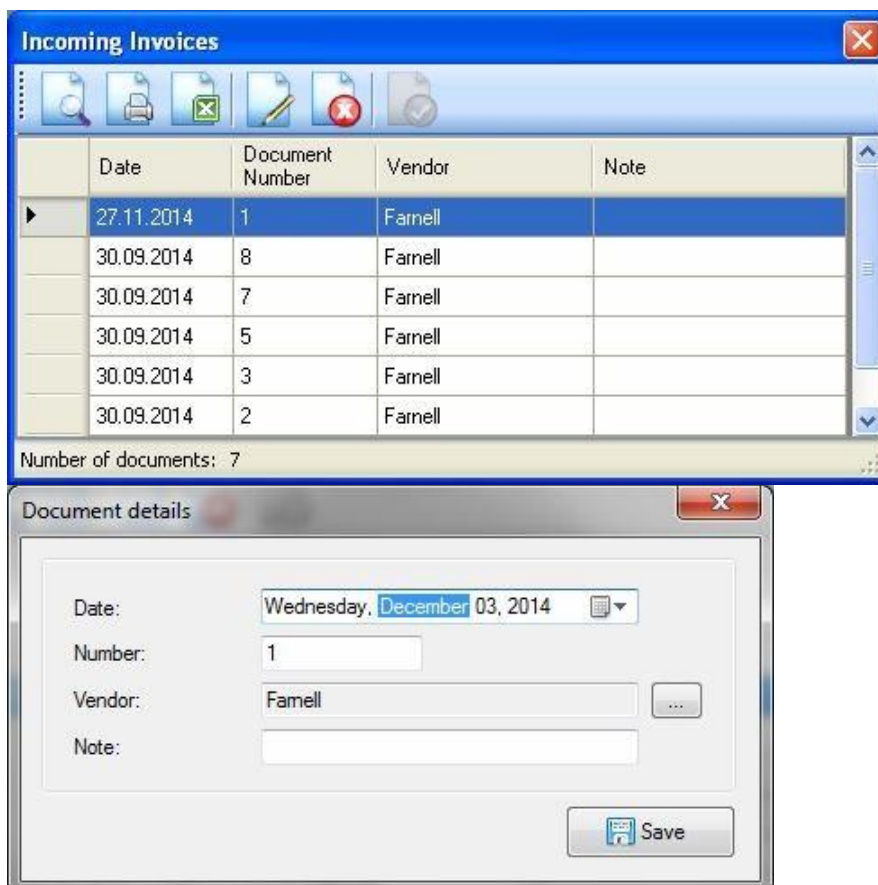
Save

Select the reserve and the required component. Enter the reserved quantity and click "Save".

5.7. Viewing and printing documents

The program allows you preview, print, save to files and export to Excel the primary documents (Incoming and Outgoing Invoices) and Event Log records.

5.7.1. Incoming Invoices



Incoming Invoices

	Date	Document Number	Vendor	Note
▶	27.11.2014	1	Farnell	
	30.09.2014	8	Farnell	
	30.09.2014	7	Farnell	
	30.09.2014	5	Farnell	
	30.09.2014	3	Farnell	
	30.09.2014	2	Farnell	

Number of documents: 7

Document details

Date: Wednesday, December 03, 2014

Number: 1

Vendor: Farnell

Note:

Save

The form of the report is given in Annex.

5.7.2. Outgoing Invoices

The 'Outgoing Invoices' window displays a table with the following data:

	Date	Document Number	Product	Note
▶	30.09.2014	78		
	30.09.2014	2		
	30.09.2014	1		

Number of documents: 3

The 'Document details' dialog box shows the following information:

Date: Wednesday, December 03, 2014
Number: 2
Product: Panel 2
Note: Module MDK-21

Save

5.7.3. Restocking Invoices

The 'Restocking Invoices' window displays a table with the following data:

Date	Document Number	Product	Note	Batch
------	-----------------	---------	------	-------

Number of documents: 0

Period: all time

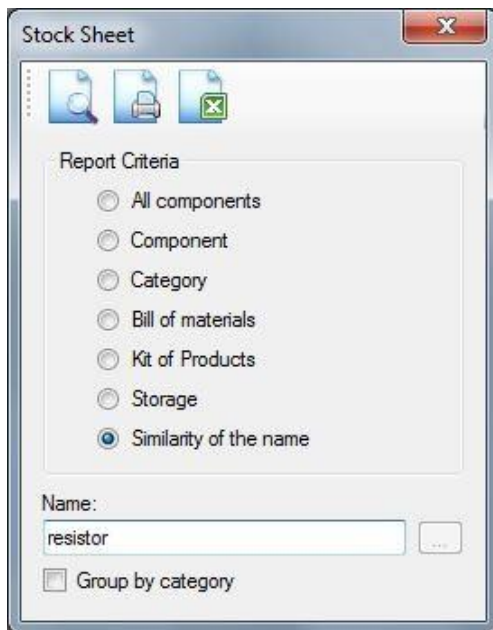
5.8. Actual Reports

The program allows you generate, preview and print the following reports:

- Stock Sheet;
- Purchase Order;
- Movement Report;
- Event Log.

5.8.1. Stock Sheet

This report allows you to identify the presence and location of components in stock, residues distribution warehouse sections, the total balances for complex products.

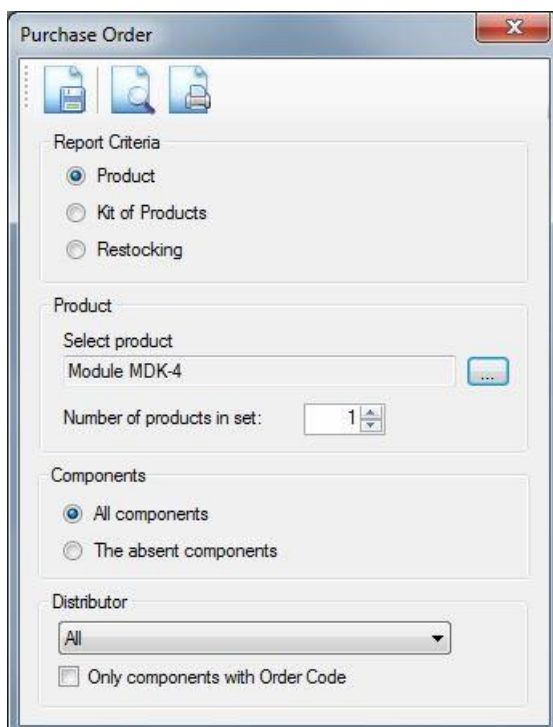


Click "Print" button to print the report.
The form of the report is given in Annex.

5.8.2. Purchase Order

This report provides a list of components to be acquired for the following cases:

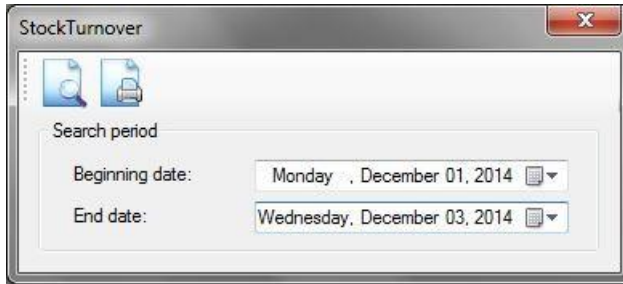
- 1) Completion of the product;
- 2) Completion of a party of products;
- 3) Production of a kit of products;
- 4) Production of a party of kit of products;
- 5) Replenishment of minimum stock.



Click "Print" button to print the report.

5.8.3. Movement Report

Report provides information on the amount of receipts and issues of each component for the selected period of time. This information allows you to minimize component procurement costs by optimizing the volume of orders.

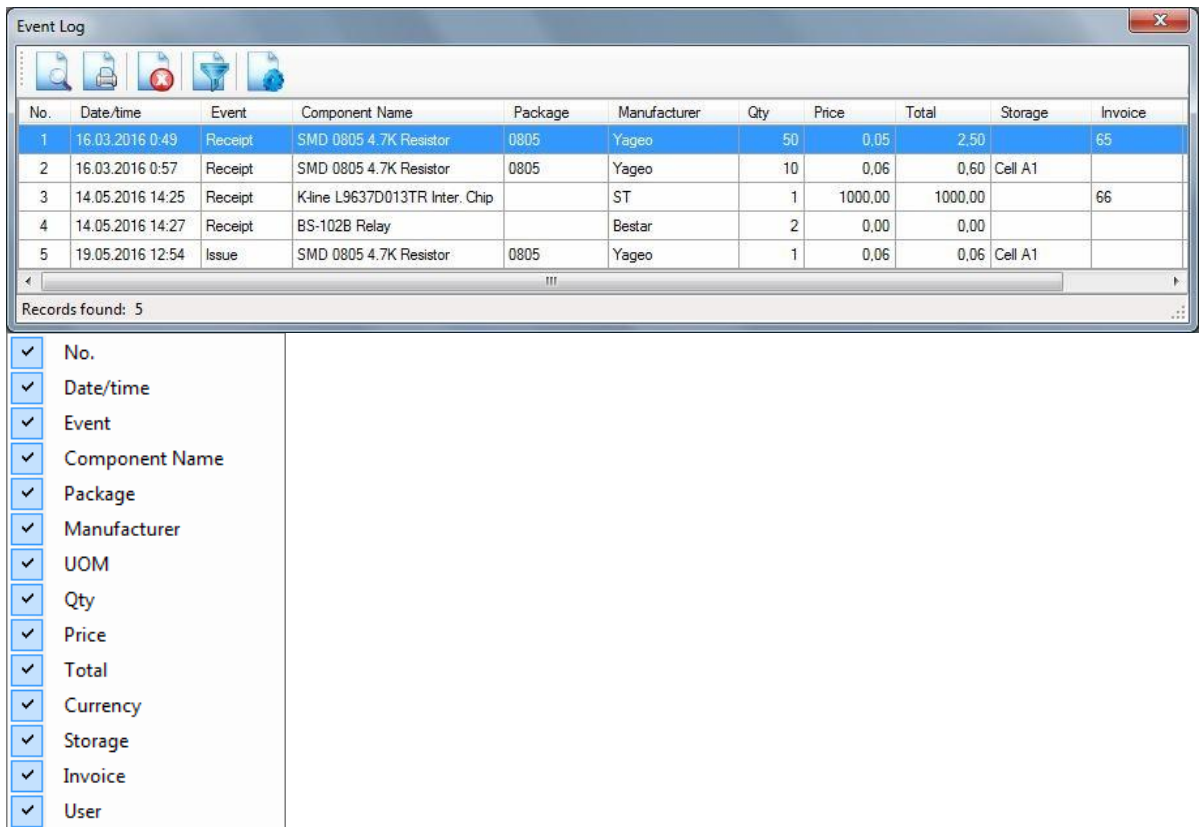


The StockTurnover dialog box contains a 'Search period' section with two date pickers. The 'Beginning date' is set to 'Monday, December 01, 2014' and the 'End date' is set to 'Wednesday, December 03, 2014'. There are also icons for a calendar and a printer.

Click "Print" button to print the report.

5.8.4. Event Log

All receipts and issues of components record to the event log.



The Event Log window displays a table of component events. The table has columns for No., Date/time, Event, Component Name, Package, Manufacturer, Qty, Price, Total, Storage, and Invoice. Below the table, there is a 'Records found: 5' status bar and a list of columns with checkboxes for filtering.

No.	Date/time	Event	Component Name	Package	Manufacturer	Qty	Price	Total	Storage	Invoice
1	16.03.2016 0:49	Receipt	SMD 0805 4.7K Resistor	0805	Yageo	50	0,05	2,50		65
2	16.03.2016 0:57	Receipt	SMD 0805 4.7K Resistor	0805	Yageo	10	0,06	0,60	Cell A1	
3	14.05.2016 14:25	Receipt	K-line L9637D013TR Inter. Chip		ST	1	1000,00	1000,00		66
4	14.05.2016 14:27	Receipt	BS-102B Relay		Bestar	2	0,00	0,00		
5	19.05.2016 12:54	Issue	SMD 0805 4.7K Resistor	0805	Yageo	1	0,06	0,06	Cell A1	

Records found: 5

- ☒ No.
- ☒ Date/time
- ☒ Event
- ☒ Component Name
- ☒ Package
- ☒ Manufacturer
- ☒ UOM
- ☒ Qty
- ☒ Price
- ☒ Total
- ☒ Currency
- ☒ Storage
- ☒ Invoice
- ☒ User



Search criteria

Period: 01.04.2017 - 17.04.2017

Event: All

Invoice: All

Component: <All components>

Storage: <All>

User: <All>

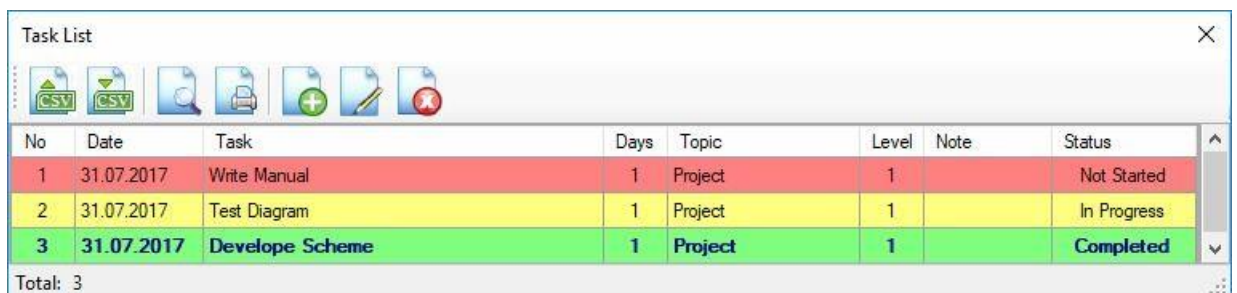
OK

5.9. Planning

5.9.1. Task List

The program provides the ability to form a list of planned tasks.

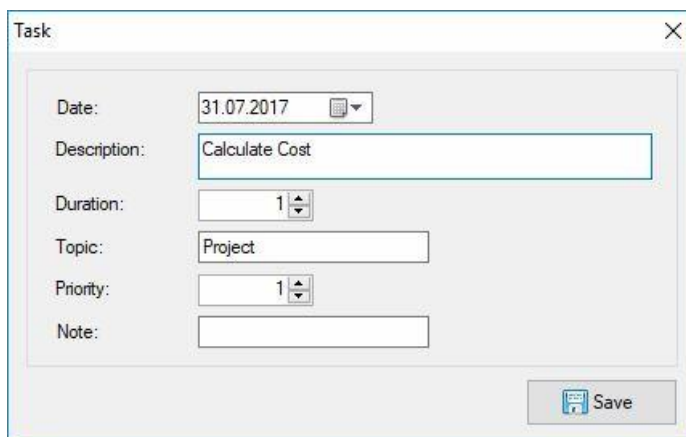
Click "Task List" item from "File" menu. The "Task List" dialog is displayed.



No	Date	Task	Days	Topic	Level	Note	Status
1	31.07.2017	Write Manual	1	Project	1		Not Started
2	31.07.2017	Test Diagram	1	Project	1		In Progress
3	31.07.2017	Develop Scheme	1	Project	1		Completed

Total: 3

To add a new task to the list, click the "Add" button. The "Task" window appears.



Task

Date: 31.07.2017

Description: Calculate Cost

Duration: 1

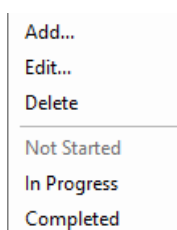
Topic: Project

Priority: 1

Note:

Save

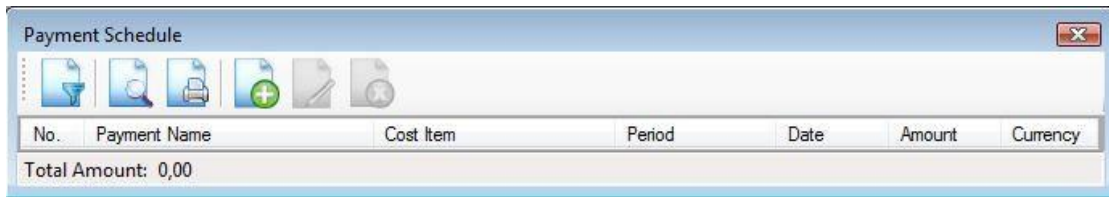
To change the status of a task, select it in the list and select the new status in the context menu



- Add...
- Edit...
- Delete
- Not Started
- In Progress
- Completed

5.9.2. Payments

The program provides an opportunity to schedule the schedule of future payments.



5.10. Analytics Reports

The program provides the following analytical data for any selected period of time:

- Information of receipt of components from suppliers
- Information of the issues of the components in the products
- Information on the use of the components in the products
- Information of circulation (the receipt and issue) of the component
- Information on the nomenclature of the components for the selected vendor
- Information on the price movements of selected component

5.10.1. Receipts from Suppliers Report

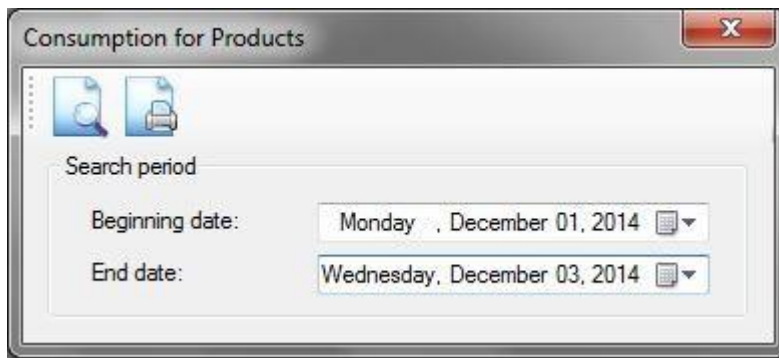
Report allows you to get statistics on the amount of components of the proceeds from all suppliers for the selected time period. This information allows you to determine the proportion of each supplier in the total procurement of components.



Click "Print" button to print the report.

5.10.2. Consumption for Products

Report allows you to get statistics on the amount of issues for all components finished products for the selected time period. This information allows you to determine the share of each product in total writedowns components.



Click "Print" button to print the report.

5.10.3. Used Components Report

Report provides information about the statistics of the use of components in the products. This information is useful for determining the most used components and unification of products.

No.	Component Name	Package	Products	Qty
1	1N4148 Diode		3	4
2	BS-102B Relay		1	1
3	Electr.Capacitor 2200 uF 10 V		3	6
4	SMD 0805 4.7K Resistor	0805	3	15
5	SMD 1206 10K Resistor	1206	3	3

Records: 5

Click "Print" button to print the report.

5.10.4. Applicability of Component Report

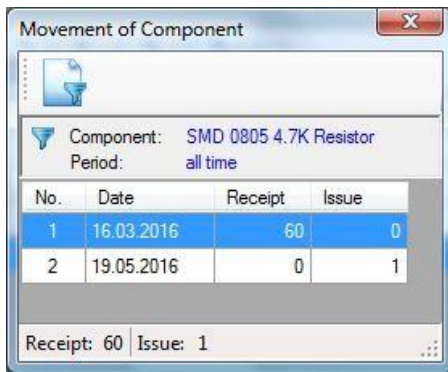
Report allows you to get detailed information about the products in which the selected component is used. This information is useful for the unification of products.

No.	Product	RefDes	Qty
1	Console PDK-4	D1	1
2	Indication board	D1	1
3	Module MDK-4	D1, D2	2

Max Qty: 2

5.10.5. Movement of Component

Report provides information on the amount of income and issues of any component for the selected period of time. This information allows you to minimize component procurement costs by optimizing the volume of orders.



Movement of Component

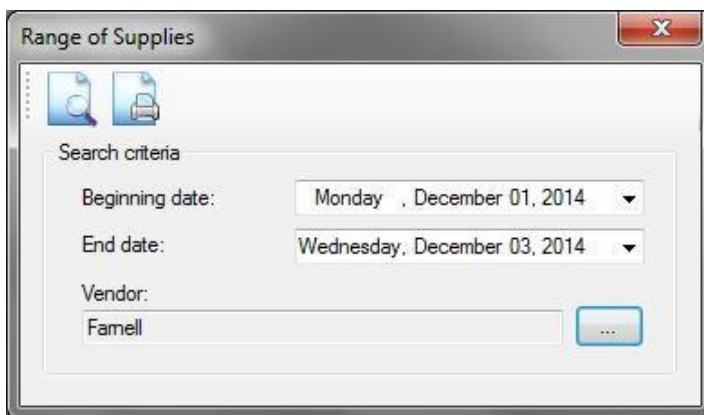
Component: SMD 0805 4.7K Resistor
Period: all time

No.	Date	Receipt	Issue
1	16.03.2016	60	0
2	19.05.2016	0	1

Receipt: 60 Issue: 1

5.10.6. Range of Suppliers Report

Report provides information about the range of components purchased from selected suppliers. This information is useful to diversify the supply of components.



Range of Supplies

Search criteria

Beginning date: Monday , December 01, 2014

End date: Wednesday, December 03, 2014

Vendor: Famell

Click "Print" button to print the report.

5.10.7. Dynamics of Prices Report

Report provides information about the selected component of the price movements. This information is useful to predict the cost of production.



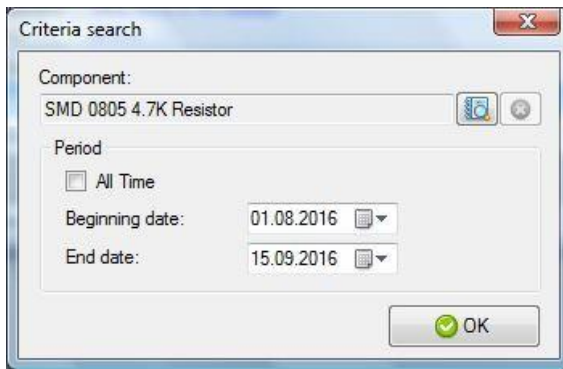
Dynamics of Prices

Component: SMD 0805 4.7K Resistor
Period: all time

No.	Date	Vendor	Qty	Price	Total
1	16.03.2016	Finder	50	0,05	2,50
2	16.03.2016		10	0,06	0,60

Change in price: 0,01

Click "Criteria Search" to change component or period of report.



Click "Print" to print the report.

5.11. Data exchange

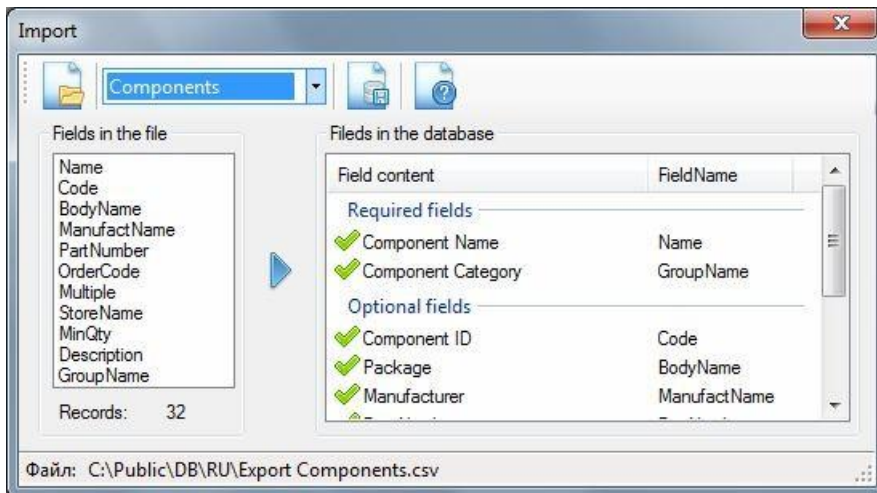
To exchange data with other programs using the CSV text files (Comma-Separated Values). Most programs, including Microsoft Office Excel, support loading and unloading of data in this format. File format is described in RFC 4180.

5.11.1. Import

The program allows you to upload the information into the database from a CSV file. The order of fields is an arbitrary. The contents of the file should meet the following requirements:

- 1) The field separator should correspond to the separator specified in the program settings.
- 2) The first line of the file must contain the headers of the data fields (field names).
- 3) The file must contain the required fields listed in the "Import" dialog.

To load the data, select item "Import" menu "File" of the main window, or click on the button "Import" in the dialog according to the type of imported data. You will see "Import" dialog box.



5.11.2. Export

Export settings include the selection of the separator, and a flag of the need to save in the first line of the file with the names of the data fields.

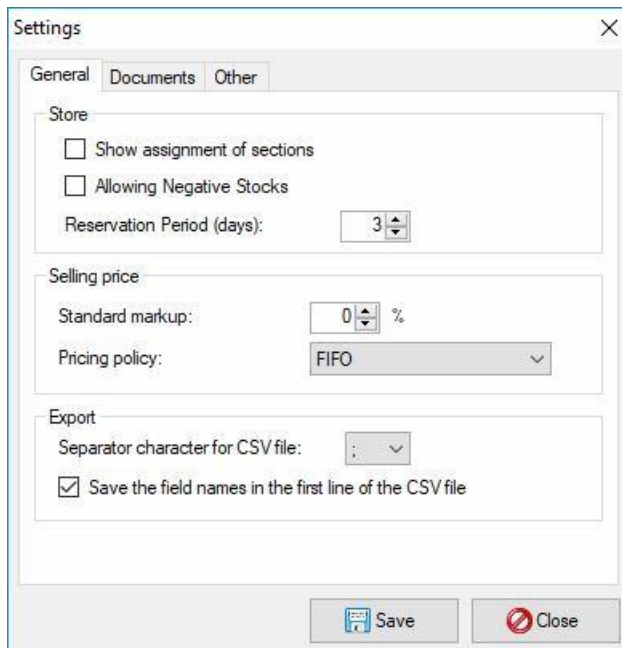
The list of exported fields, and the sort order of the data corresponds of the display columns in the table.

To save data to a file, click "Export to File" in the dialog box that contains the data to be exported.

5.12. Preferences

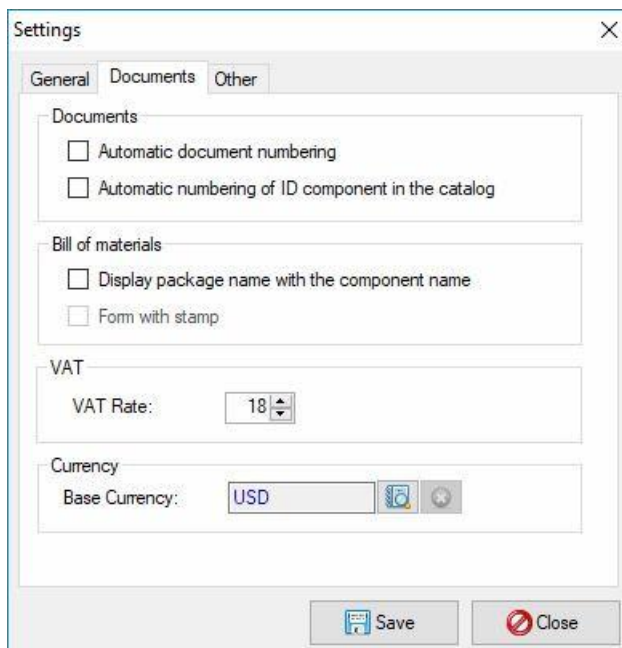
5.12.1. Configuring application settings

Select command "Settings" menu "Configuration".



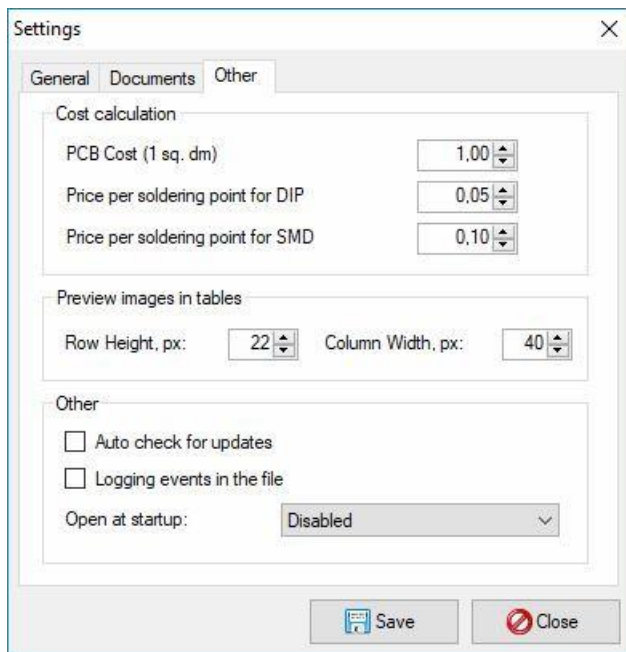
The 'Settings' dialog box is shown with the 'General' tab selected. It contains three sections: 'Store', 'Selling price', and 'Export'. The 'Store' section has checkboxes for 'Show assignment of sections' and 'Allowing Negative Stocks', and a 'Reservation Period (days)' spinner set to 3. The 'Selling price' section has a 'Standard markup' spinner set to 0% and a 'Pricing policy' dropdown set to 'FIFO'. The 'Export' section has a 'Separator character for CSV file' dropdown set to ';' and a checked checkbox for 'Save the field names in the first line of the CSV file'. At the bottom are 'Save' and 'Close' buttons.

Select the tab "Documents"



The 'Settings' dialog box is shown with the 'Documents' tab selected. It contains three sections: 'Documents', 'Bill of materials', and 'VAT'. The 'Documents' section has checkboxes for 'Automatic document numbering' and 'Automatic numbering of ID component in the catalog'. The 'Bill of materials' section has checkboxes for 'Display package name with the component name' and 'Form with stamp'. The 'VAT' section has a 'VAT Rate' spinner set to 18. The 'Currency' section has a 'Base Currency' dropdown set to 'USD'. At the bottom are 'Save' and 'Close' buttons.

Select the tab "Other"



Press "Save" button to save the settings.

5.12.2. Manage security settings

Select command "Users" menu "Configuration".



The default user icon is marked with a green arrow and the name "Admin". The default admin password is "123456". It is recommended to change it before turning on the authorization mode. The program is launched with the default user rights at the disabled user authorization mode.



The "User" dialog box contains the following fields and options:

- User name:** A text field containing "Peter".
- Password:** A password field with masked characters "*****" and a visibility toggle icon (an eye).
- Password confirmation:** A password field with masked characters "*****".
- User permissions:** A list of five permissions, each with a checked checkbox:
 - ☒ Add Components
 - ☒ Write-off Components
 - ☒ Stock adjustment
 - ☒ Cancel operations
 - ☒ Administration
- Save:** A button with a floppy disk icon and the text "Save".

By default the request of authorization is disabled. Press button "Login Options" in the menu "Configuration" and set flag in the "Authorization" dialog.



The "Authorization" dialog box contains the following options:

- Authorization details:**
 - ☐ Require a password at startup
 - ☐ Multi-user mode
- Save:** A button with a floppy disk icon and the text "Save".

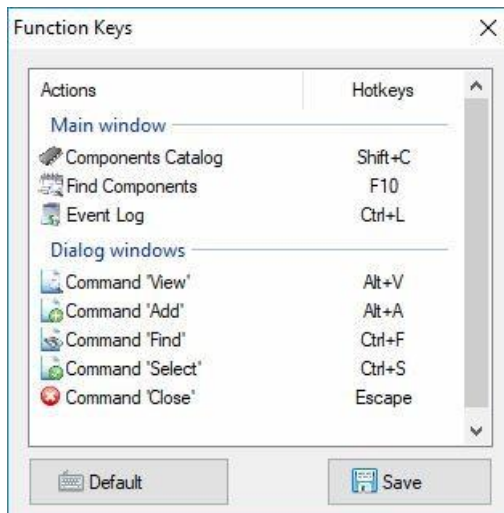


The "Authorization" dialog box displays a warning message with a yellow triangle icon:

User authorization mode has been activated
Entrance to the program without a password will not be possible
Record your administrator password in a safe place
Confirm authorization mode?

At the bottom, there are two buttons: a grey button with a floppy disk icon and the text "a" (likely "Save"), and a blue button with the text "Her" (likely "Yes").

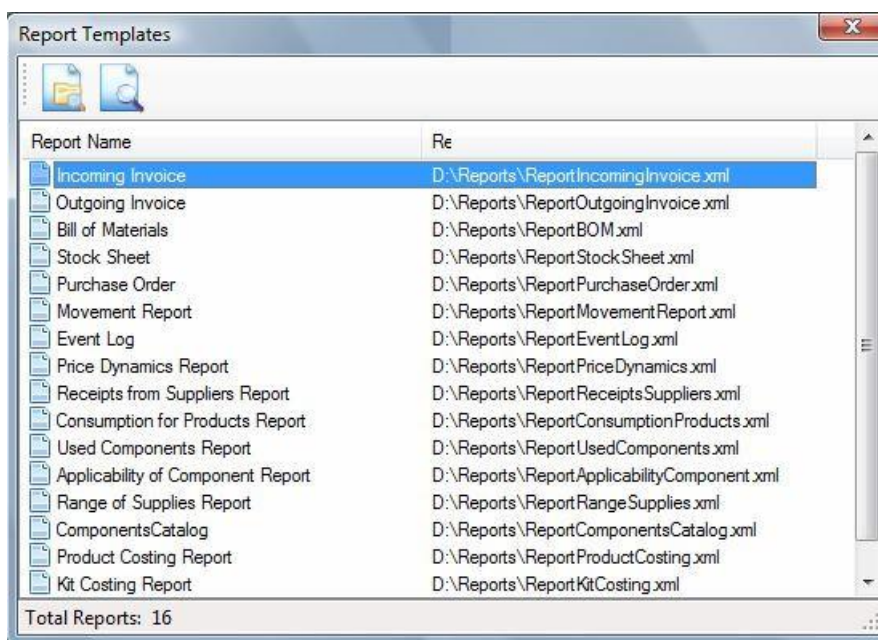
5.12.3. Function keys



5.12.4. Report Templates

The program includes a visual designer of report templates and supports the creation of customized report templates.

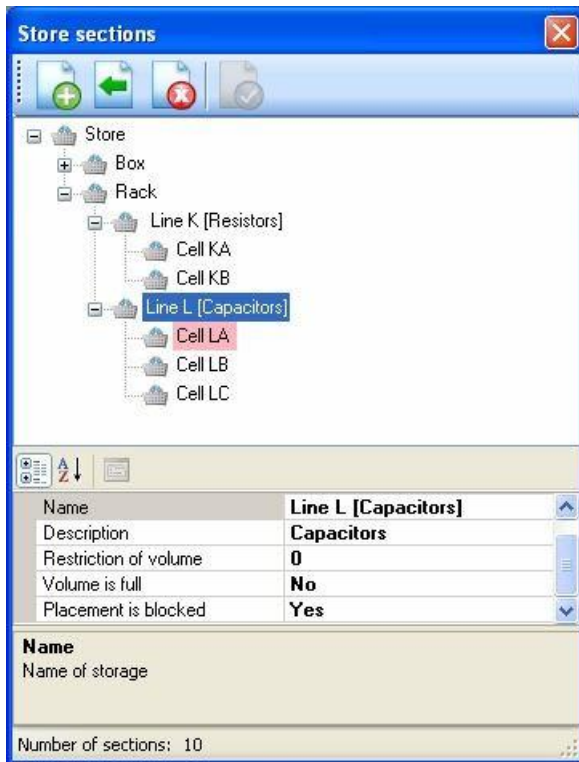
Click item "Report Templates" in the menu "Configuration". Dialog "Report Templates" is displayed.



5.12.5. Definition of the warehouse's structure

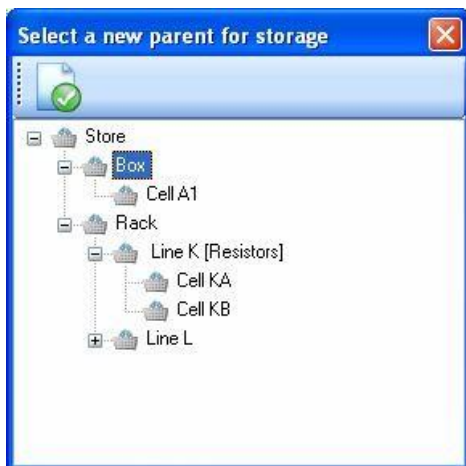
The program supports multi-level system of the warehouse. For example, a warehouse can include multiple racks, shelves, boxes and cells.

Click item "Store Sections" in the menu "Configuration" for definition of the actual warehouse's structure. Dialog "Store Sections" is displayed.



To expand or collapse all nodes right click on the tree. Select "Expand All" or "Collapse All" item in the context menu.


Click "Add new section" button to create a new section (storage, rack, box...). Section called "New section" will be created and added to the structure of the warehouse.

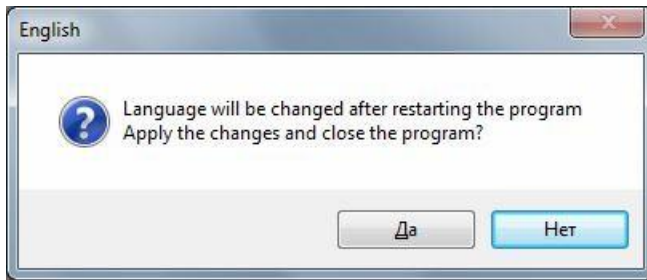


Select a new parent and click "Select" button.

5.12.6. Selecting a language

The program supports multi-language interface. The default language of the interface corresponds to the operating system language.

To change the interface language, click on the button  in the toolbar and in the list that appears, select the desired interface language. A confirmation will be displayed.



After confirmation, the program will be automatically closed. After restarting the program will have selected the required language.

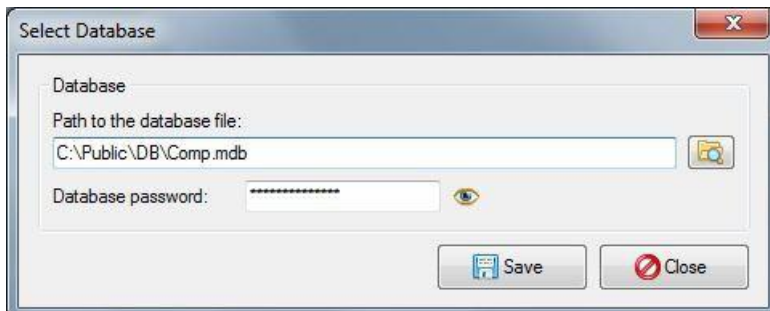
5.13. Service functions

5.13.1. Select the database

If was changed the database location will be displayed the warning.



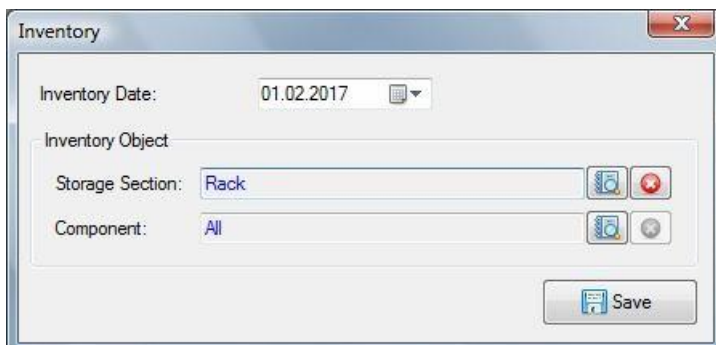
Click item "Select Database" menu "Tools". A dialog box "Select Database" appears on the screen.



Select the database file "Comp.mdb" and click "Save".

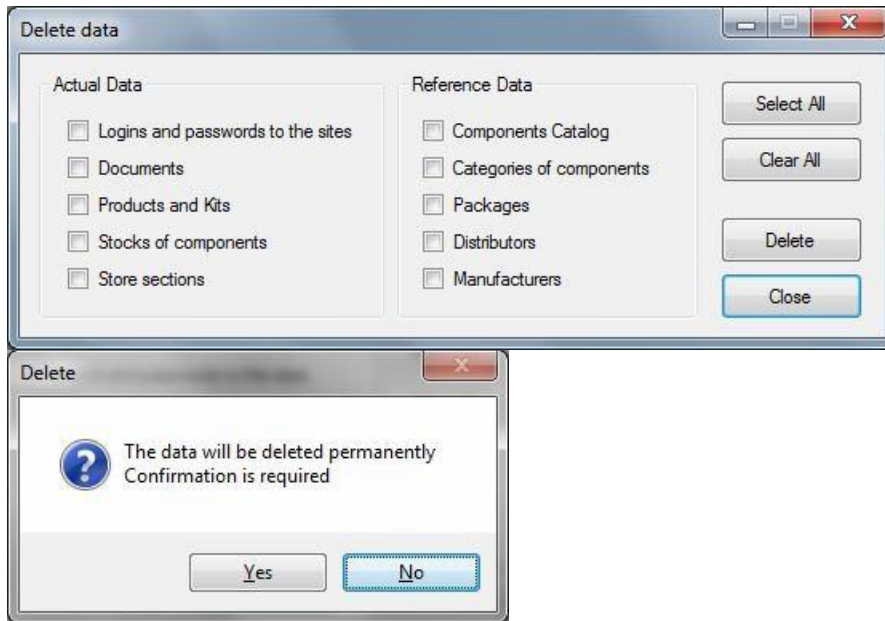
Attention! After change of the path to the database it is required a restart program to reconnect.

5.13.2. Inventory



5.13.3. Deleting data

Select command "Delete data" menu "Tools".

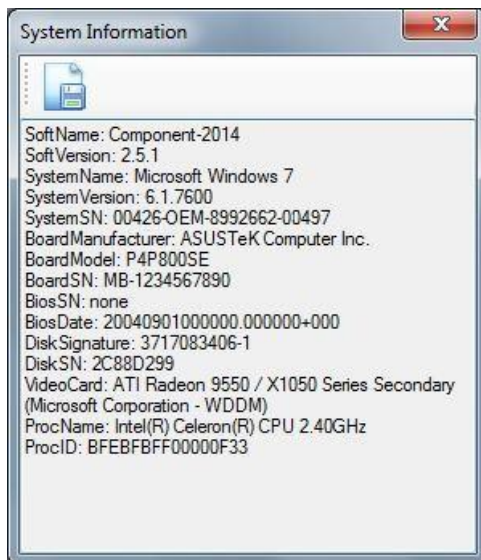


Click "Yes" button to delete the selected data. Click "No" button to cancel deleting.

WARNING: It is recommended to make a copy of the database file before deleting the data.

5.13.4. System Information

Select command "System Information" menu "Help".



5.13.5. About dialog

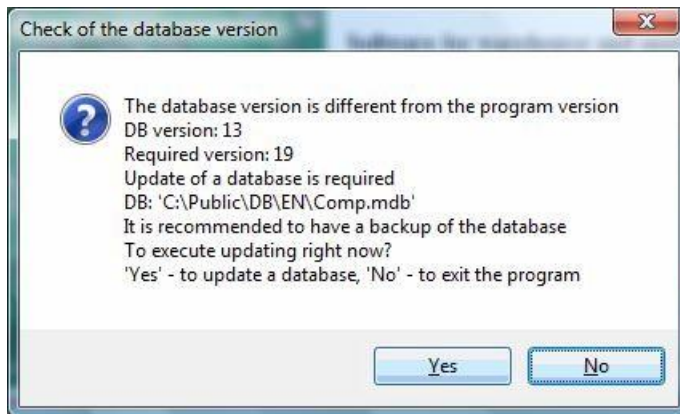
Click "About" item from "Help" menu. The "About" dialog is displayed.

5.14. Update version software

In the case of the release of a new version it becomes available for download from the developer's site. Updating is as follows:

- Download the latest version and unpack it from archive
- Make the database backup and save the old version of the program;
- Copy the new version to the catalog of the program
- Launch a new version of the program.

The program can ask for confirmation to update the database version:



After updating the database, the new version of the program will be ready for use.

5.15. Database maintenance

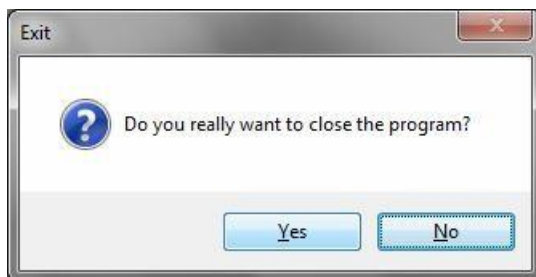
Database maintenance includes backup and compact database.

It is recommended to periodically copy the file "Comp.mdb" to the backup disk.

Compact database to reduce the database file size. To compact the database you have to use MS Access or utility "Jetcomp.exe" (available for download from the Microsoft website).

5.16. Closing the program

Select "Exit" item from "File" menu. The confirmation request will be displayed.



Click "Yes" button to close the program. Click "No" button to cancel closing.

WARNING! It is recommended periodically to make a copy of the database file in a safe place.

6. Software licensing

6.1. License options

The functionality of the program depends on the type of license..

The default program comes with a FREE license.

To expand the possibilities of the program is enough to buy license and activate the license key.

6.2. License info

To view information about the active license type, click the "License Info" menu "Help". You will see a window "License Info" with information about the active license.

The type of active license is displayed in the status bar.

To purchase a license, click the "Buy a license" button. Internet browser with developer site will be opened.

6.3. License activation

The license grants the right to use the program on one computer. Checking license includes comparing the license key and activation code. Activation code is generated automatically based on the hardware configuration of the computer with the installed program.

To activate the purchased license on the selected computer, click the "Activate" button. Information about the method of activating the program will be displayed.

6.4. License agreement

To view the license agreement, click the License Agreement button. The License Agreement will be displayed.

7. Technical Support

If you have any queries about using the program or you need additional information, contact us:

Isimsoftware Sln.

<http://www.isimsoftware.com>

E-mail: info@isimsoftware.com

8. Appendices

8.1. File list

No.	File	Description
1	Comp.exe	Executable File
2	Comp.mdb	Database File
3	UserGuide.pdf	User Guide
4	LicenseAgreement.txt	License Agreement
5	History.txt	Version History
6	IsimsoftwareReport.exe	Report Designer
7	IsimsoftwareReportLib.dll	Report Designer Library
8	IsimsoftwareReportManual.pdf	Report Designer Manual
9	Reports	Report Templates Folder

8.2. List of Reports

No.	Documents & Reports	Report Template File Name
1	Incoming Invoice	ReportIncomingInvoice.xml
2	Outgoing Invoice	ReportOutgoingInvoice.xml
3	Bill of Materials	ReportBOM.xml
4	Stock Sheet	ReportStockSheet.xml
5	Purchase Order	ReportPurchaseOrder.xml
6	Movement Report	ReportMovementReport.xml
7	Event Log	ReportEventLog.xml
8	Dynamics of prices	ReportPriceDynamics.xml
9	Receipts of components from suppliers	ReportReceiptsSuppliers.xml
10	Consumption for products	ReportConsumptionProducts.xml
11	Used Components	ReportUsedComponents.xml
12	Applicability of component	ReportApplicabilityComponent.xml
13	Range of supplies	ReportRangeSupplies.xml
14	Component Catalog	ReportComponentsCatalog.xml
15	Product Costing	ReportProductCosting.xml
16	Kit Costing	ReportKitCosting.xml
17	Task List	ReportTaskList.xml

8.3. Document and report templates

The program comes with a set of templates for all printed reports. In addition, the report designer for creating custom printed forms is included in the software package. For a detailed description of creating or adjusting report templates, see the Report Designer User Guide.

8.3.1. Print form "Incoming Invoice"

Print preview

Close

Page 1

INCOMING INVOICE No. 1

Vendor: Farnell Date: 12/3/2014

No.	Component Name	Manufacturer	Qty	Price	Total
1	1N4148 Diode		10	0.10	1.00
2	BS-115C-5VDC Relay	Bestar	2	2.00	4.00
3	1K Resistor		21	0.06	1.26
4	Capacitor SMD 1206 0.1 uF	Murata	5	0.16	0.80
5	SMD 0805 4.7K Resistor	Yageo	8	0.10	0.80
Total amount:					7.86

CEO _____

The list of data fields available for use when filling of the document:

Code	Field Name	Information in the field
1	Num	Invoice No.
2	Vendor	Vendor Name
3	Date	Invoice Date
4	Total	Invoice Amount
5	DocColon	Page Header
6	DocHeader	Report Header
7	DocFooter	Report Footer

Data fields available for use when filling out the table rows of a document:

Code	Field Name	Information in the field
1	SN	Row No.
2	Name	Component Name
3	Vendor	Manufacturer Name
4	Qty	Qty
5	Price	Price
6	Amount	Amount

8.3.2. Print form "Outgoing Invoice"

Print preview

Page 1

OUTGOING INVOICE No. 3

Product: Panel 1 Date: 12/3/2014

No.	Component Name	Manufacturer	Store	Qty	Price	Total
1	IN4148 Diode	Bestar	Cell A1	2	0.10	0.20
2	BS-102B Relay	Bestar	Cell A1	1	2.00	2.00
3	1K Resistor	Yageo	Cell KA	13	0.06	0.78
4	SMD 0805 4.7K Resistor	Yageo	Cell KB	2	0.10	0.20
5	Ceramic Capacitor 0.47 uF	Yageo	Cell LB	3	0.16	0.48
Total amount:						3.66

CEO _____

The list of data fields available for use when filling of the document:

Code	Field Name	Information in the field
1	Num	Invoice No.
2	Product	Product
3	Date	Invoice Date
4	Total	Invoice Amount
5	DocColon	Page Header
6	DocHeader	Report Header
7	DocFooter	Report Footer

Data fields available for use when filling out the table rows of a document:

Code	Field Name	Information in the field
1	SN	Row No.
2	Name	Component Name
3	Vendor	Manufacturer Name
4	Qty	Qty
5	Price	Price
6	Amount	Amount
7	Storage	Storage

8.3.3. Print form "Bill of Materials"

BILL OF MATERIALS

Product: Module MDK-4

No.	RefDes	Description	Qty	Note
1		1K Resistor	5	
2		1N5820 Diode	2	
3		AT24C512B-25 SO-8 Memory	1	
4		Ceramic Capacitor 0.33 uF	2	
5		NE555 Timer Chip	1	

Total: 11 items

CEO _____

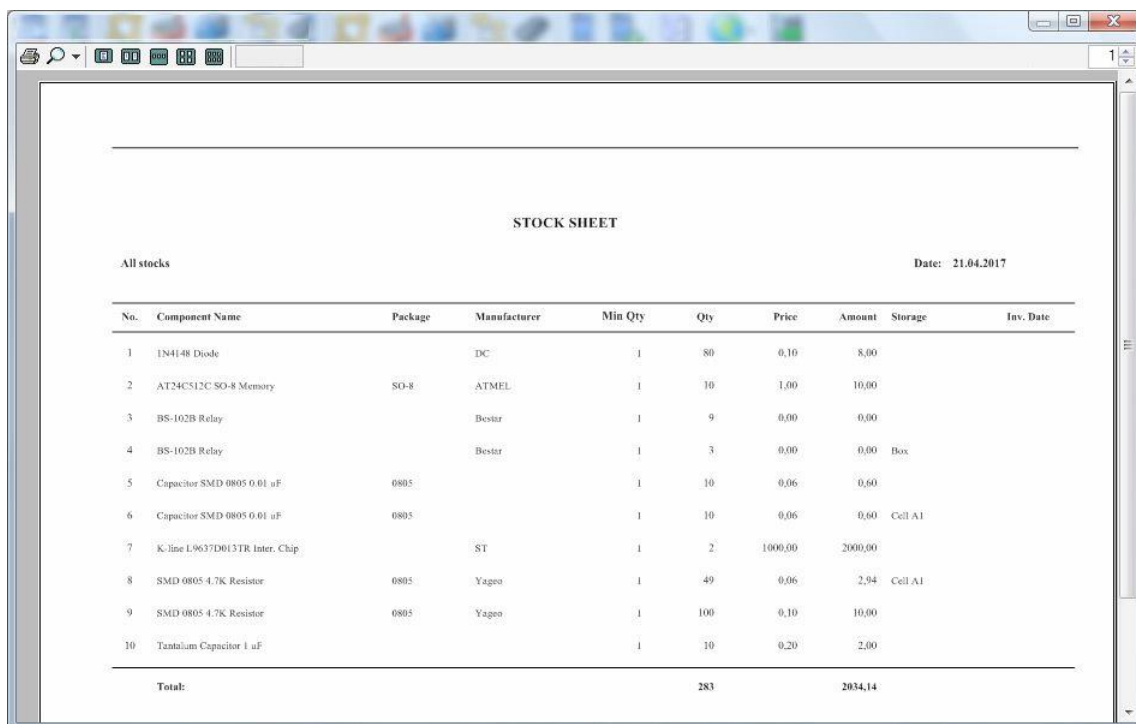
The list of data fields available for use when filling of the document:

Code	Field Name	Information in the field
1	Product	Product
2	Total	Invoice Amount
5	DocColon	Page Header
6	DocHeader	Report Header
7	DocFooter	Report Footer

Data fields available for use when filling out the table rows of a document:

Code	Field Name	Information in the field
1	SN	Row No.
2	Pos	RefDes
3	Name	Component Name
4	Qty	Qty
5	Note	Note

8.3.4. Print form "Stock Sheet"



STOCK SHEET

All stocks Date: 21.04.2017

No.	Component Name	Package	Manufacturer	Min Qty	Qty	Price	Amount	Storage	Inv. Date
1	1N4148 Diode		DC	1	80	0,10	8,00		
2	AT24C512C SO-8 Memory	SO-8	ATMEL	1	10	1,00	10,00		
3	BS-102B Relay		Bestur	1	9	0,00	0,00		
4	BS-102B Relay		Bestur	1	3	0,00	0,00	Box	
5	Capacitor SMD 0805 0.01 uF	0805		1	10	0,06	0,60		
6	Capacitor SMD 0805 0.01 uF	0805		1	10	0,06	0,60	Cell A1	
7	K-line L9637D013TR Inter. Chip		ST	1	2	1000,00	2000,00		
8	SMD 0805 4.7K Resistor	0805	Yageo	1	49	0,06	2,94	Cell A1	
9	SMD 0805 4.7K Resistor	0805	Yageo	1	100	0,10	10,00		
10	Tantalum Capacitor 1 uF			1	10	0,20	2,00		
Total:					283		2034,14		

The list of data fields available for use when filling of the document:

Code	Field Name	Information in the field
1	Filter	Filter
2	TotalQty	Total Qty
3	TotalAmount	Total Amount
5	DocColon	Page Header
6	DocHeader	Report Header
7	DocFooter	Report Footer

Data fields available for use when filling out the table rows of a document:

Code	Field Name	Information in the field
1	SN	Row No.
2	CompName	Component Name
3	Size	Package
4	Manufact	Manufacturer
5	MinQty	Min Qty
6	Qty	Qty
7	Price	Price
8	Amount	Amount
9	Storage	Storage
10	DateInv	Inventory Date
11	GroupName	Category
12	ReservedQty	Reserved Qty

8.3.5. Print form "Purchase Order"

21.04.2017

PURCHASE ORDER

Product: Module MDK-4 (Lot Size: 1 pcs. / All components)

No.	Component Name	Package	Manufacturer	Part Number	Vendor	Order Code	Available Qty	Required Qty	Purchase Qty	Price	Amount
1	1N4148 Diode	New-package #7	DC		Elfa	2132543 Finder	80	2	2	0,10	0,20
2	Electr Capacitor 2200 uF 16 V	New-package #7	Jamicon				0	2	2	0,00	0,00
3	SMD 0805 4.7K Resistor	0805	Yageo		Elfa	171-2070 Farnell	149	5	5	0,10	0,50
4	SMD 1206 10K Resistor	1206	Yageo				0	1	1	0,00	0,00
Total:									10		0,70

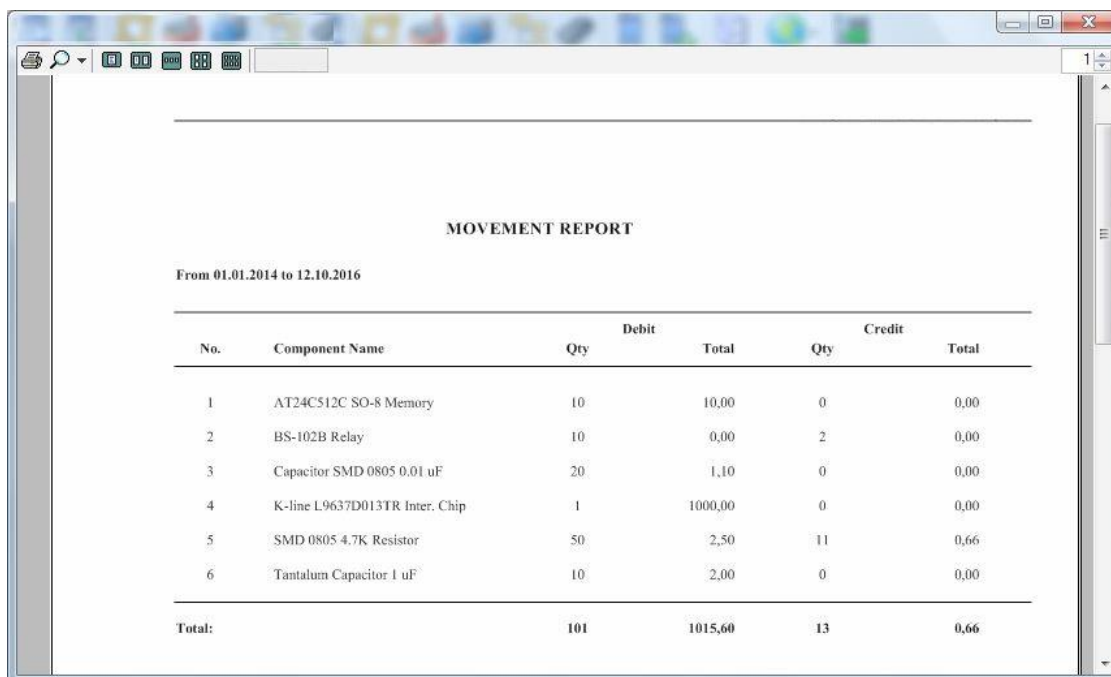
The list of data fields available for use when filling of the document:

Code	Field Name	Information in the field
1	Filter	Filter Description
2	TotalQty	Total Qty
3	TotalAmount	Total Amount
5	DocColon	Page Header
6	DocHeader	Report Header
7	DocFooter	Report Footer

Data fields available for use when filling out the table rows of a document:

Code	Field Name	Information in the field
1	SN	Row No.
2	CompName	Component Name
3	Size	Package
4	Manufact	Manufacturer
5	PartNumber	Part Number
6	Vendor	Vendor Name
7	OrderCode	Order Code
8	QtyStock	Available Qty
9	QtyReq	Required Qty
10	QtyOrder	Purchase Qty
11	Price	Price
12	Amount	Amount

8.3.6. Print form "Movement Report"



MOVEMENT REPORT						
From 01.01.2014 to 12.10.2016						
No.	Component Name	Qty	Debit Total	Qty	Credit Total	Total
1	AT24C512C SO-8 Memory	10	10,00	0	0,00	
2	BS-102B Relay	10	0,00	2	0,00	
3	Capacitor SMD 0805 0.01 uF	20	1,10	0	0,00	
4	K-line L9637D013TR Inter. Chip	1	1000,00	0	0,00	
5	SMD 0805 4.7K Resistor	50	2,50	11	0,66	
6	Tantalum Capacitor 1 uF	10	2,00	0	0,00	
Total:		101	1015,60	13	0,66	

The list of data fields available for use when filling of the document:

Code	Field Name	Information in the field
1	Period	Period
2	TotalInQty	Debit Total Qty
3	TotalInAmount	Debit Total Amount
4	TotalOutQty	Credit Total Qty
5	DocColon	Page Header
6	DocHeader	Report Header
7	DocFooter	Report Footer
8	TotalOutAmount	Credit Total Amount

Data fields available for use when filling out the table rows of a document:

Code	Field Name	Information in the field
1	SN	Row No.
2	CompName	Component Name
3	InQty	Debit Qty
4	InAmount	Debit Amount
5	OutQty	Credit Qty
6	OutAmount	Credit Amount

8.3.7. Print form "Event Log"

Micron Limited Corp.

EVENT LOG

From 01.03.2016 to 19.05.2016 Component: <All>

No.	Date/time	Event	Component Name	Package	Manufacturer	Qty	Price	Total	Store	Doc	User
1	16.03.2016 0:49	Receipt:	SMD 0805 4.7K Resistor	0805	Yageo	50	0.05	2.50		65	
2	16.03.2016 0:57	Receipt:	SMD 0805 4.7K Resistor	0805	Yageo	10	0.06	0.60	Cell A1		
3	14.05.2016 14:25	Receipt:	K-line L9637D913TR Inter. Chip		ST	1	1000.00	1000.00		66	
4	14.05.2016 14:27	Receipt:	BS-102B Relay		Bestar	2	0.00	0.00			
5	19.05.2016 12:54	Issue	SMD 0805 4.7K Resistor	0805	Yageo	1	0.06	0.06	Cell A1		Admin

CEO _____ Mr. James Richardson

The list of data fields available for use when filling of the document:

Code	Field Name	Information in the field
1	FilterComp	Component
2	Period	Period
5	DocColon	Page Header
6	DocHeader	Report Header
7	DocFooter	Report Footer

Data fields available for use when filling out the table rows of a document:

Code	Field Name	Information in the field
1	SN	Row No.
2	Date	Date/Time
3	Action	Event
4	CompName	Component Name
5	Size	Package
6	Manufact	Manufacturer
7	Qty	Qty
8	Price	Price
9	Amount	Amount
10	Storage	Storage
11	Doc	Document No.
12	User	User

8.3.8. Print form "Dynamics of prices"

DYNAMICS OF PRICES

Component: SMD 0805 4.7K Resistor Period: all time

No.	Date	Vendor	Qty	Price	Total
1	16.03.2016	Finder	50	0,05	2,50
2	16.03.2016		10	0,06	0,60

Min price: 0,05 Max price: 0,06 Change in price: 0,01

The list of data fields available for use when filling of the document:

Code	Field Name	Information in the field
1	Comp	Component Name
2	Period	Period
3	MinPrice	Min Price
4	MaxPrice	Max Price
5	DocColon	Page Header
6	DocHeader	Report Header
7	DocFooter	Report Footer
8	DeltaPrice	Change in Price

Data fields available for use when filling out the table rows of a document:

Code	Field Name	Information in the field
1	SN	Row No.
2	Date	Date
3	Vendor	Manufacturer Name
4	Qty	Qty
5	Price	Price
6	Amount	Amount

8.3.9. Print form "Receipts of components from suppliers"

Print preview

Micron Limited Corp.

RECEIPTS OF COMPONENTS FROM SUPPLIERS

From 12/1/2014 to 12/3/2014

No.	Vendor	Items	Qty	Total
1	Farnell	10	92	18.76
Total:			92	18.76

CEO _____ Mr. James Richardson

The list of data fields available for use when filling of the document:

Code	Field Name	Information in the field
1	Period	Period
2	TotalQty	Total Qty
3	TotalAmount	Total Amount
5	DocColon	Page Header
6	DocHeader	Report Header
7	DocFooter	Report Footer

Data fields available for use when filling out the table rows of a document:

Code	Field Name	Information in the field
1	SN	Row No.
2	Vendor	Vendor Name
3	Pos	Items
4	Qty	Qty
5	Amount	Amount

8.3.10. Print form "Consumption for products"

Print preview

Micron Limited Corp.

CONSUMPTION FOR PRODUCTS

From 12/3/2014 to 12/3/2014

No.	Product	Qty	Total
1	Panel 1	21	3.66
2	Panel 2	15	5.48
Total:		36	9.14

CEO _____ Mr. James Richardson

The list of data fields available for use when filling of the document:

Code	Field Name	Information in the field
1	Period	Period
2	TotalQty	Total Qty
3	TotalAmount	Total Amount
5	DocColon	Page Header
6	DocHeader	Report Header
7	DocFooter	Report Footer

Data fields available for use when filling out the table rows of a document:

Code	Field Name	Information in the field
1	SN	Row No.
2	Product	Product
4	Qty	Qty
5	Amount	Amount

8.3.11. Print form "Used Components"

NY, 1500 1st avenue, of. 55

Micron Limited Corp.

USED COMPONENTS

No.	Component Name	Package	Products	Qty
1	1N4148 Diode		1	1
2	BS-102B Relay		1	1
3	Electr.Capacitor 2200 uF 10 V		1	2
4	SMD 0805 4.7K Resistor	0805	1	5
5	SMD 1206 10K Resistor	1206	1	1

CEO _____ Mr. James Richardson

The list of data fields available for use when filling of the document:

Code	Field Name	Information in the field
5	DocColon	Page Header
6	DocHeader	Report Header
7	DocFooter	Report Footer

Data fields available for use when filling out the table rows of a document:

Code	Field Name	Information in the field
1	SN	Row No.
2	Name	Component Name
3	Size	Package
4	ProductQty	Products Qty
5	Qty	Items Qty

8.3.12. Print form "Applicability of component"

NY, 1500 1st avenue, of. 55

Micon Limited Corp.

APPLICABILITY OF COMPONENT

Component: SMD 0805 4.7K Resistor

No.	Product	RefDes	Qty
1	Module MDK-4	R1-R5	5
Total:			5

CEO _____ Mr. James Richardson

The list of data fields available for use when filling of the document:

Code	Field Name	Information in the field
1	Name	Component Name
2	MaxQty	Max Qty
5	DocColon	Page Header
6	DocHeader	Report Header
7	DocFooter	Report Footer

Data fields available for use when filling out the table rows of a document:

Code	Field Name	Information in the field
1	SN	Row No.
2	Product	Product Name
3	Ref	RefDes
4	Qty	Qty

8.3.13. Print form "Range of supplies"

Print preview

Micon Limited Corp.

RANGE OF SUPPLIES

Vendor: Farnell From 12/3/2014 to 12/3/2014

No.	Component Name	Qty	Price	Total
1	1K Resistor	15	0.06	0.90
2	1K Resistor	21	0.06	1.26
3	1N4148 Diode	8	0.10	0.80
4	1N4148 Diode	10	0.10	1.00
5	BS-102B Relay	2	2.00	4.00
6	BS-115C-5VDC Relay	1	2.00	2.00
7	BS-115C-5VDC Relay	2	2.00	4.00
8	Capacitor SMD 1206 0.1 uF	5	0.16	0.80
9	Ceramic Capacitor 0.47 uF	20	0.16	3.20
10	SMD 0805 4.7K Resistor	8	0.10	0.80
Total:	7 items	92		18.76

CEO Mr. James Richardson

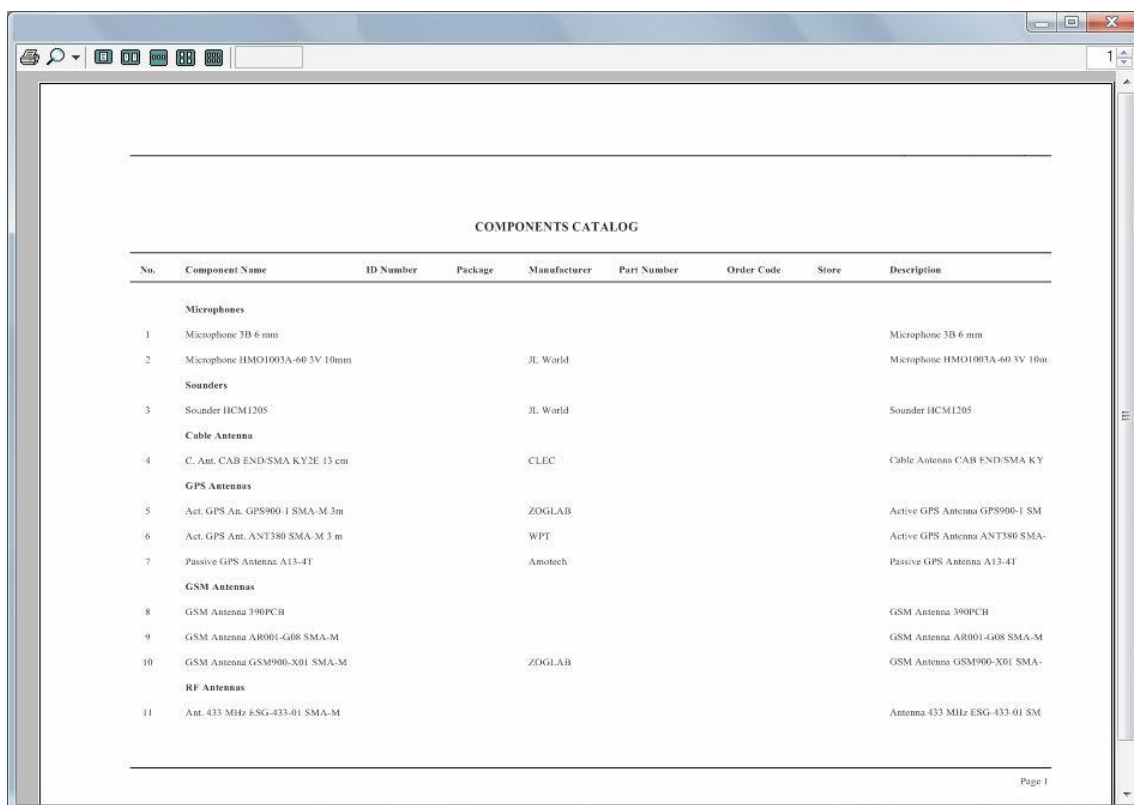
The list of data fields available for use when filling of the document:

Code	Field Name	Information in the field
1	Vendor	Vendor Name
2	Period	Period
3	TotalPos	Total Items
4	TotalQty	Total Qty
5	DocColon	Page Header
6	DocHeader	Report Header
7	DocFooter	Report Footer
8	TotalAmount	Total Amount

Data fields available for use when filling out the table rows of a document:

Code	Field Name	Information in the field
1	SN	Row No.
2	CompName	Component Name
3	Qty	Qty
4	Price	Price
5	Amount	Amount

8.3.14. Print form "Components Catalog"



No.	Component Name	ID Number	Package	Manufacturer	Part Number	Order Code	Store	Description
Microphones								
1	Microphone 3B 6 mm							Microphone 3B 6 mm
2	Microphone HMO1003A-60 3V 10mm			JL World				Microphone HMO1003A-60 3V 10mm
Sounders								
3	Sounder HCM1205			JL World				Sounder HCM1205
Cable Antenna								
4	C. Ant. CAB END-SMA KY2E 13 cm			CLEC				Cable Antenna CAB END-SMA KY
GPS Antennas								
5	Act. GPS An. GPS900-1 SMA-M 3m			ZOGLAB				Active GPS Antenna GPS900-1 SM
6	Act. GPS Ant. ANT380 SMA-M 3 m			WPT				Active GPS Antenna ANT380 SMA-
7	Passive GPS Antenna A13-4T			Amotech				Passive GPS Antenna A13-4T
GSM Antennas								
8	GSM Antenna 390PCB							GSM Antenna 390PCB
9	GSM Antenna AR001-G08 SMA-M							GSM Antenna AR001-G08 SMA-M
10	GSM Antenna GSM900-X01 SMA-M			ZOGLAB				GSM Antenna GSM900-X01 SMA-
RF Antennas								
11	Ant. 433 MHz ESG-433-01 SMA-M							Antenna 433 MHz ESG-433-01 SM

The list of data fields available for use when filling of the document:

Code	Field Name	Information in the field
5	DocColon	Page Header
6	DocHeader	Report Header
7	DocFooter	Report Footer

Data fields available for use when filling out the table rows of a document:

Code	Field Name	Information in the field
1	SN	Row No.
2	CompName	Component Name
3	ID	Material No.
4	Size	Package
5	Manufact	Manufacturer
6	PartNumber	Part Number
7	OrderCode	Order Code
8	Storage	Storage
9	Description	Description
10	GroupName	Category

8.3.15. Print form "Product Costing"

22.04.2017

PRODUCT COSTING

Product: Console PDK-4

Description:

Components Parts: 4

Qty: 9

Amount: 0,60

PCB Area, sq.dm: 1,00

Cost: 10,00

Soldering points DIP: 0

SMD: 12

Total: 12

Assembly cost: 1,20

Total production cost: 11,80

The list of data fields available for use when filling of the document:

Code	Field Name	Information in the field
1	Name	Product Name
2	Des	Product Description
3	QtyNom	Components Parts
4	QtyComp	Components Qty
5	CostComp	Components Amount
6	BoardSquare	PCB Area
7	BoardCost	PCB Cost
8	SoldDIP	Soldering Points DIP
9	SoldSMD	Soldering Points SMD
10	SoldAll	Soldering Points All
11	CostAsm	Assembly Cost
12	TotalCost	Total Cost
13	DocColon	Page Header
14	DocHeader	Report Header
15	DocFooter	Report Footer

8.3.16. Print form "Kit Costing"

NY, 1500 1st avenue, of 55

Micron Limited Corp.

KIT COSTING

KIT: New kit #314

No.	Product designation	Components of the product			PCB Area, sq.dm	PCB Cost	Soldering points	Soldering cost	Total cost	Party Size	Party cost
		Parts	Qty	Amount							
1	Console PDK-4	4	9	0,25	1,00	1,00	12	1,20	2,45	2	4,90
2	Module MDK-4	4	9	0,25	0,06	0,06	12	1,20	1,51	3	4,53

Total production cost: 9,43

Note: excluding the value of pre-production, assembly, adjustment, labeling, inspection and packaging products

CEO _____ Mr. James Richardson

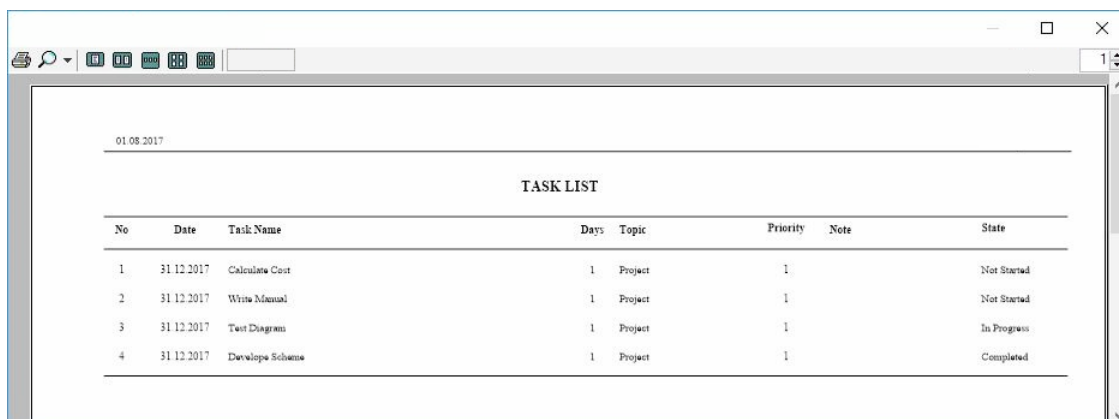
The list of data fields available for use when filling of the document:

Code	Field Name	Information in the field
1	Kit	Kit Name
2	TotalCost	Total Cost
5	DocColon	Page Header
6	DocHeader	Report Header
7	DocFooter	Report Footer

Data fields available for use when filling out the table rows of a document:

Code	Field Name	Information in the field
1	SN	Row No.
2	Product	Product
3	QtyNom	Components Parts
4	QtyComp	Components Qty
5	CostComp	Components Amount
6	BoardSquare	PCB Area
7	BoardCost	PCB Cost
8	SoldAll	Soldering Points All
9	CostAsm	Assembly Cost
10	ProductCost	Product Cost
11	ProductQty	Party Size
12	PartyCost	Party Cost

8.3.17. Print form "Task List"



No	Date	Task Name	Days	Topic	Priority	Note	State
1	31.12.2017	Calculate Cost	1	Project	1		Not Started
2	31.12.2017	Write Manual	1	Project	1		Not Started
3	31.12.2017	Test Diagram	1	Project	1		In Progress
4	31.12.2017	Develop Scheme	1	Project	1		Completed

Data fields available for use when filling out the table rows of a document:

Code	Field Name	Information in the field
1	SN	Row No.
2	Date	Date
3	Name	Components Parts
4	Duration	Components Qty
5	Topic	Components Amount
6	Priority	PCB Area
7	Note	PCB Cost
8	State	Soldering Points All